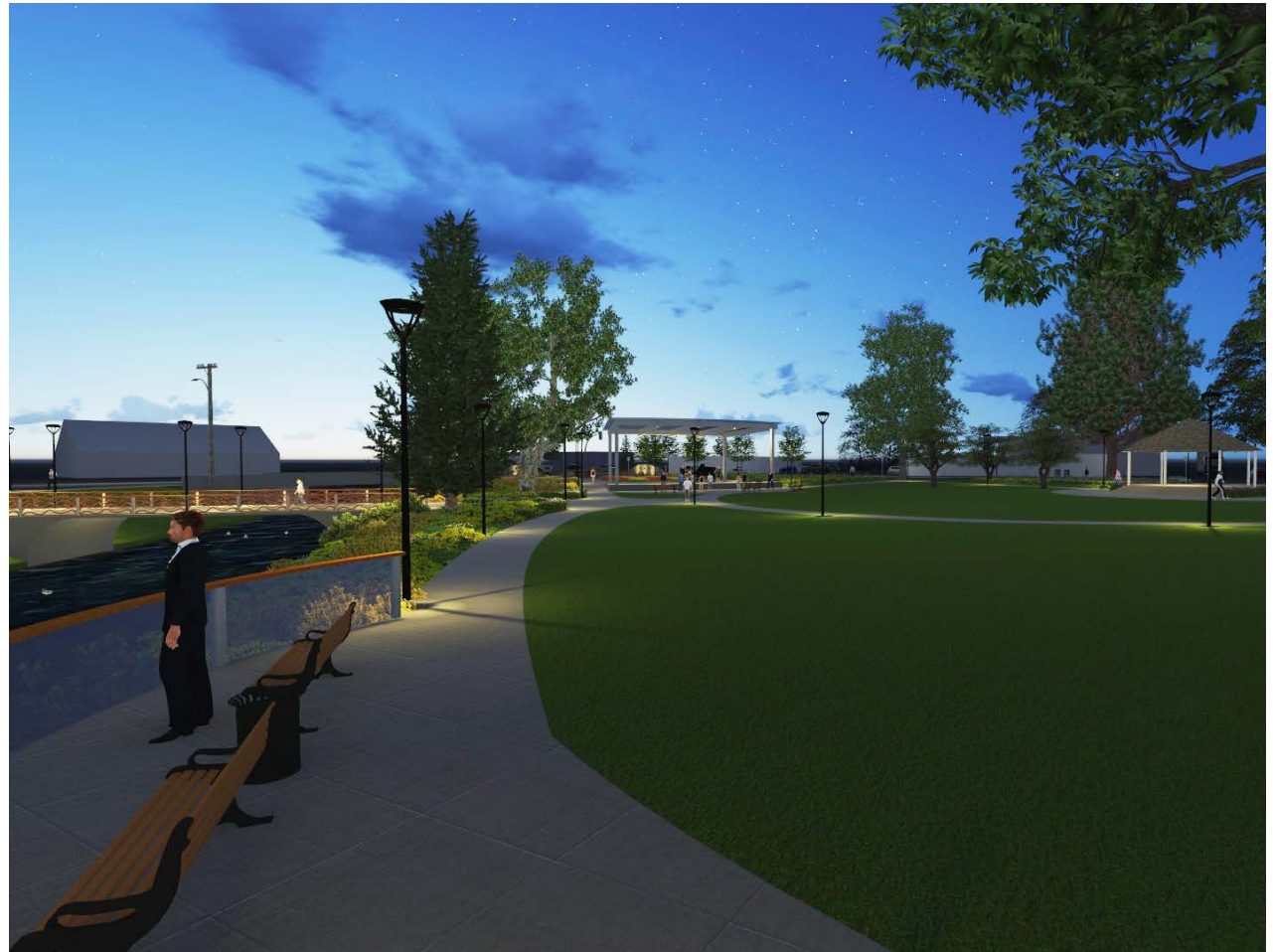


Ralston Park Improvement Plan

Committee Visioning Workshop – City Council Presentation

Prepared by Stangeland and Associates, Landscape Architecture and Design

May 8, 2019



Committee Chair

Jason Bollen



Vice Chair

Ron Whitlatch

Committee Members

Deanna Bowser

Matt Cowart

Tre Kennedy

Christina Untiet

Jason Williams



City Manager

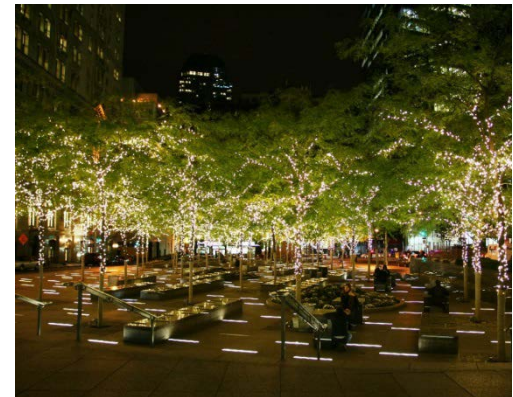
Gary Marks

City Clerk

Linda Kaser

Administrative Assistant

Donna Trippett



Stangeland and Associates Team

Brad Stangeland - Principal

Alex Misar - Associate

Meeting and Workshop Outlines - Process

Visioning, Analysis, & Development

Committee Meeting 1

Project Introduction, Outline, Visioning and Goals
Thursday, January 31, 2019

Committee Meeting 2

Opportunities/Constraints, Needs/Desires, Programming and Content Development
Thursday, February 28, 2019

Design & Revisions

Design Presentation – 1

Present Preliminary Design, Discuss and Refine
Thursday, March 7, 2019

Design Presentation – 2

Present Design Revisions, Discuss and Refine
Thursday, April 4, 2019

Final Master Plan and Accompanying Documents

Submit Final Documents to City for Fiscal Budgeting Analysis
Thursday, April 11, 2019

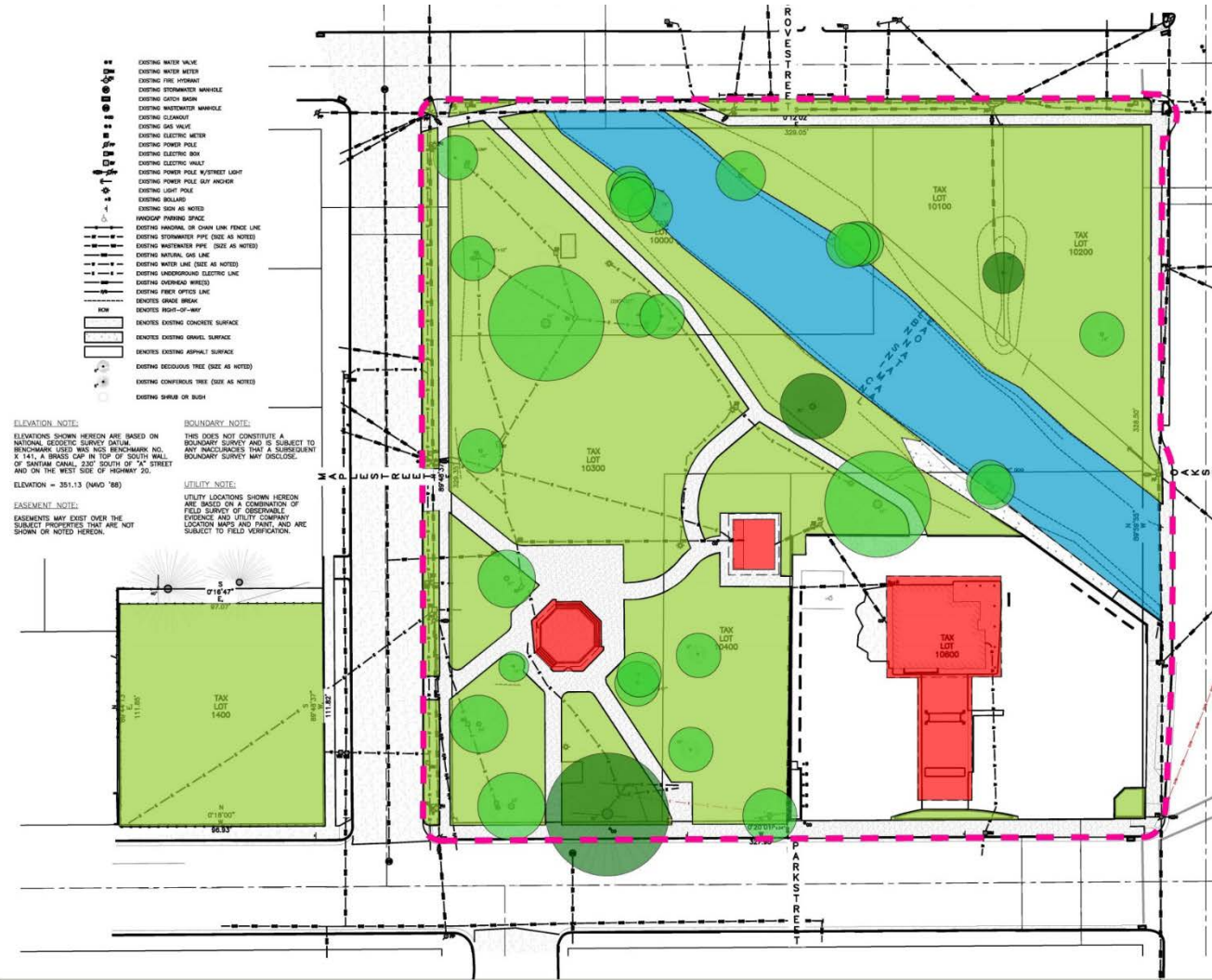
Context – Geographical

Ralston Park is located in the SE corner of downtown Lebanon. Situated between residential development to the north, east and south, Ralston park is primarily used by local residents.

Highway 20 (the park's western border) is heavily trafficked and impacts accessibility into and out of the park.

The Santiam Canal runs through the park, dividing the park into two uniquely separate spaces, one of which is extremely underutilized.

An old gas station at the SW corner of the park currently blocks visual access into the park and creates a non-usable space.



Context – Social

Though the park is currently underutilized, it does provide year-round opportunities for social gathering.

Of particular interest are the summer music series, the annual Christmas/holiday celebration, and National Night Out.

The rose gardens provide a space for the local gardening club, and events in the existing gazebo range from weddings to celebrations and musical performances.

The remaining areas in the park invite unwanted patrons, who contribute to the uncomfortable and unsafe feeling identified by local community members.



Context – Historical

Though Ralston Park has been used as a public space for over a century, the park was the original location of city founder Jeremiah Ralston's homestead.

Plaques honoring this rich history, and others celebrating notable local community members and events, are spread throughout the park.

This history and the existing plaques are an important park component and should be preserved and celebrated in any future design.



Site Analysis – Existing Assets and Problems

Existing Assets

- Centrally located (in town)
- Water canal is peaceful & fun to look at
- Gazebo provides space for activities and gathering
- Existing trees/plants (24 trees)
- Rose Garden (2,310 S.F.)
- Historical Context
- Opportunities for music and community gathering



Existing Rose Garden



Existing Gazebo



Existing Trees



Santiam Canal

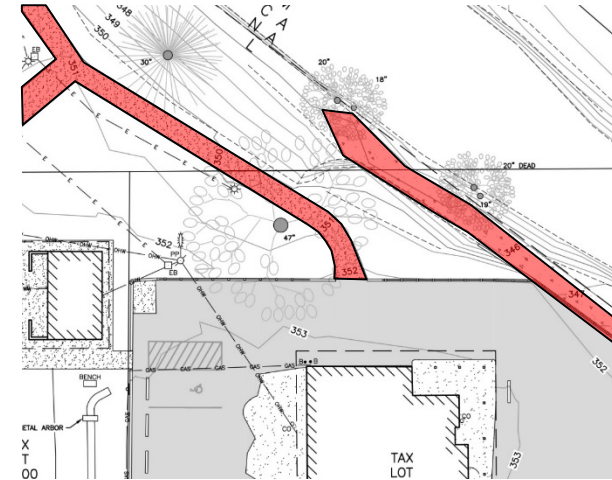
Site Analysis – Existing Assets and Problems

Existing Problems

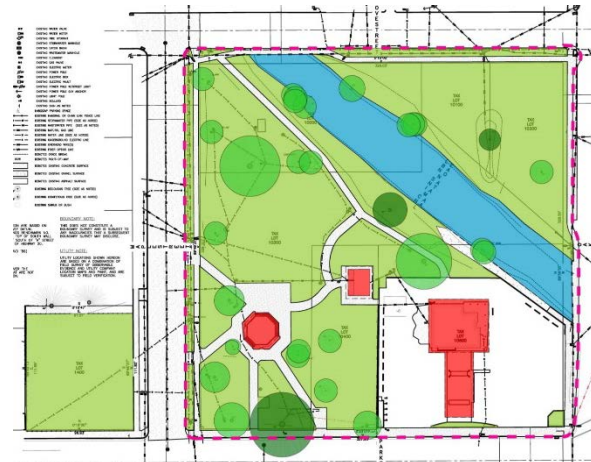
- Unsavory people / drug use
- Canal divides the park (60' ROW)
- Nothing to do – park lacks amenities
- Poor lighting (5 lights)
- Existing gas station is unwanted/eyesore
- Feels uncomfortable / doesn't feel safe
- Path network is incomplete / paths don't connect and end abruptly



Existing Gas Station



Existing Path Network



Park is Divided



Park Lacks Amenities

Site Analysis – Core Points

- The park lacks a common characteristic and is **ununified**. This is further perpetuated by the existing physical and visual **divisions** (the canal, existing gas station, bathrooms and gazebo), which results in five (5) separate spaces with different materials, uses, activities, etc.
- Over half of the park is **underutilized** or not used at all (gas station and SE corner)
- The **park lacks a strong connection** to, nor access from, the surrounding neighborhoods – especially along the western side which borders highway 20
- The park has attracted **unwanted patrons** and behaviors, which has resulted in **safety concerns**, public unease, discomfort and lack of use
- The park **lacks amenities** and activities for all people, ages, abilities, etc.
- There is no center to the park – **no heart** or centralized area for people to congregate



Site Analysis – Goals

- Unify the park through a **holistic design**, with common materials and consistent thematic elements. Tie together disconnected and underutilized places and **celebrate the canal**.
- Eliminate blind spots in the park by **removing and/or moving buildings**. Eliminate extreme grade changes, and open up views into the park and canal.
- Create new spaces and **provide** elements that facilitate **activities** that serve all members of the community
- **Strengthen** the park's **connection** to its surrounding context, while providing universally accessible spaces
- Design a revitalized space that encourages greater use, while increasing safety through **lighting** and increased public ownership



Design Needs and Desires – Committee Input

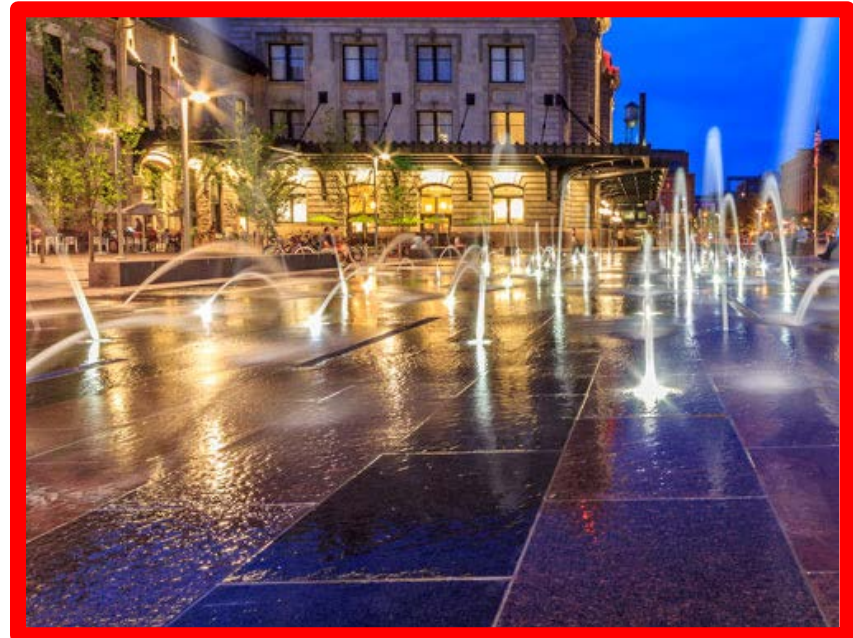
Design Elements

- Splashpad / Playing Fountain
- Bridge (ICONIC)
- Lighting
- Trash/Recycling
- ADA Accessible Pathways
- Restrooms
- Grassy Areas
- Performance Space
- River Overlook/Access
- Interactive Artwork/Activities/Kinetic Art



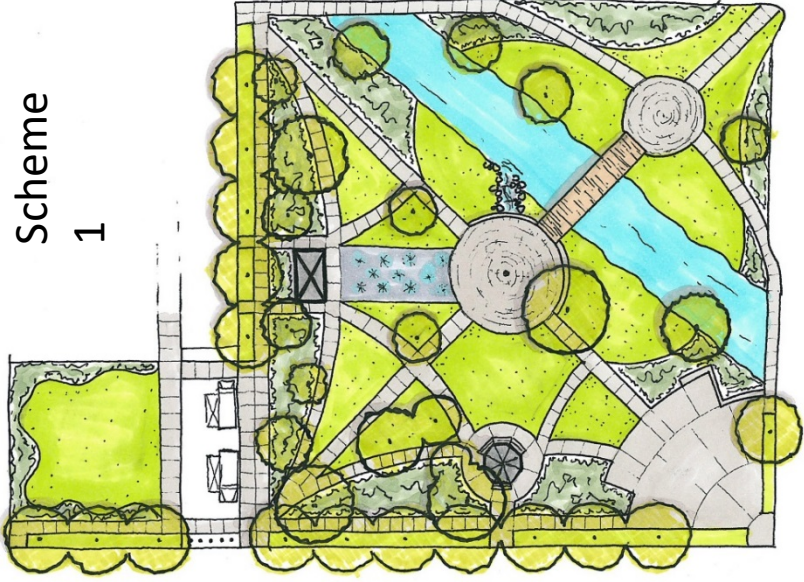
Design Needs and Desires – Park Precedents and Elements of Design

		RED	BLUE	GREEN	TOTAL	RESPONSES
		1	2	3		
Fountain	1	2	3	2	14	7
	2	2	2	2	12	6
	3	1	2	3	14	6
	4	2	1	4	16	7
Bridge	1	3	3		9	6
	2	2	3	1	11	6
	3	1	2	3	14	6
	4		3	4	18	7
	5		2	6	22	8
	6	7			7	7
	7	4		2	10	6
	8	1	4	2	15	7
Lighting	1		3	4	18	7
	2		2	5	19	7
	3	2	3	2	14	7
	4		1	6	20	7
	5	3	1	2	11	6
	6	3	1	1	8	5
	7	3	1	3	14	7
Water Edge	1	1	1	6	21	8
	2	4		3	13	7
	3		5	3	19	8
	4	1	3	3	16	7
Bend Bridge	1	4		2	10	6
	2	1	4		9	5
	3		1	6	20	7
Holiday	1		4	2	14	6
	2		1	6	20	7
	3	1	3	4	19	8
	4		1	7	23	8
Flag Plaza	1	3	3	2	15	8
	2		3	5	21	8
	3		4	4	20	8
Theater	1	2	2	4	18	8
	2	1		7	22	8
	3	3	3	2	15	8
	4	2	4	2	16	8
Artwork	1	4	1	2	12	7
	2	6		1	9	7
	3	6	1		8	7
	4	3	4		11	7
	5	3	3	1	12	7
	6	2	1	3	13	6

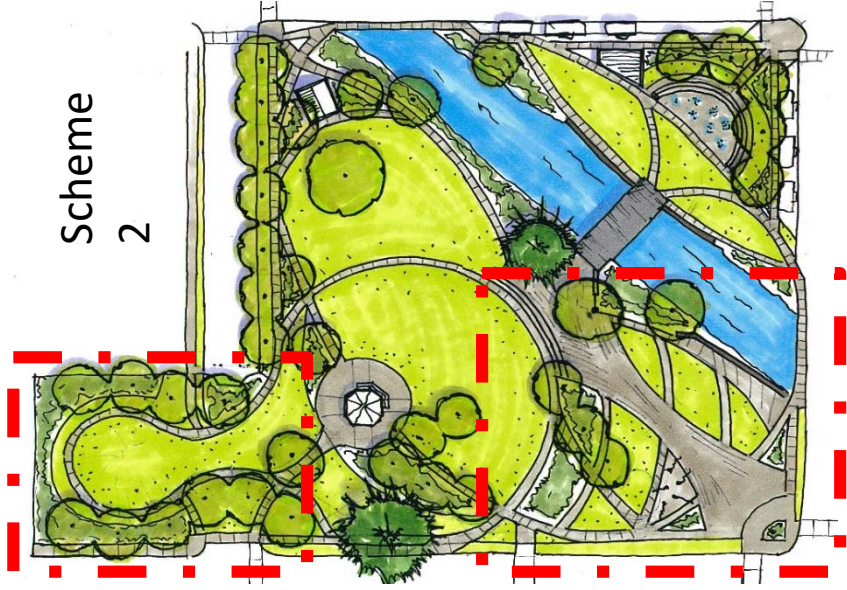


Preliminary Schematic Design Concepts

Scheme 1



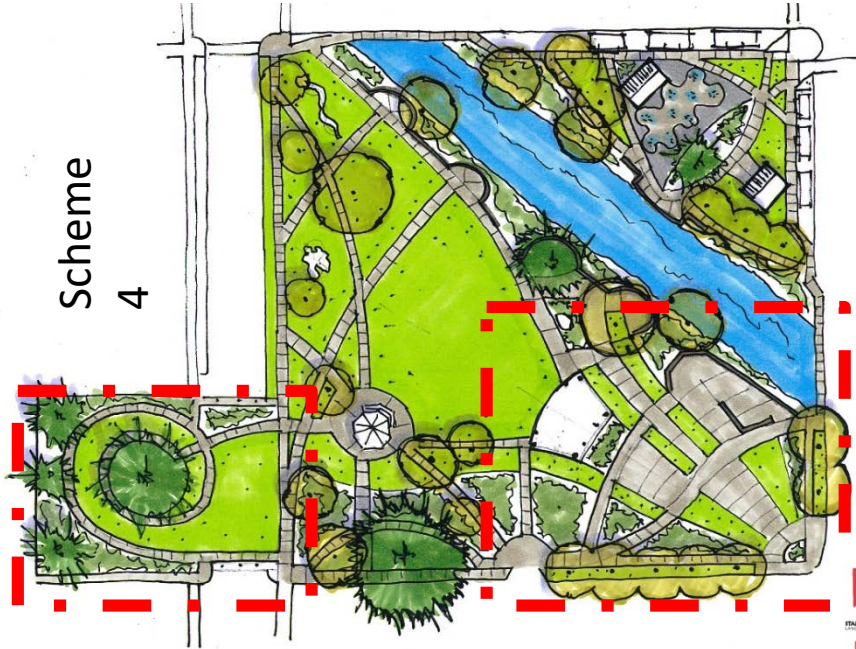
Scheme 2



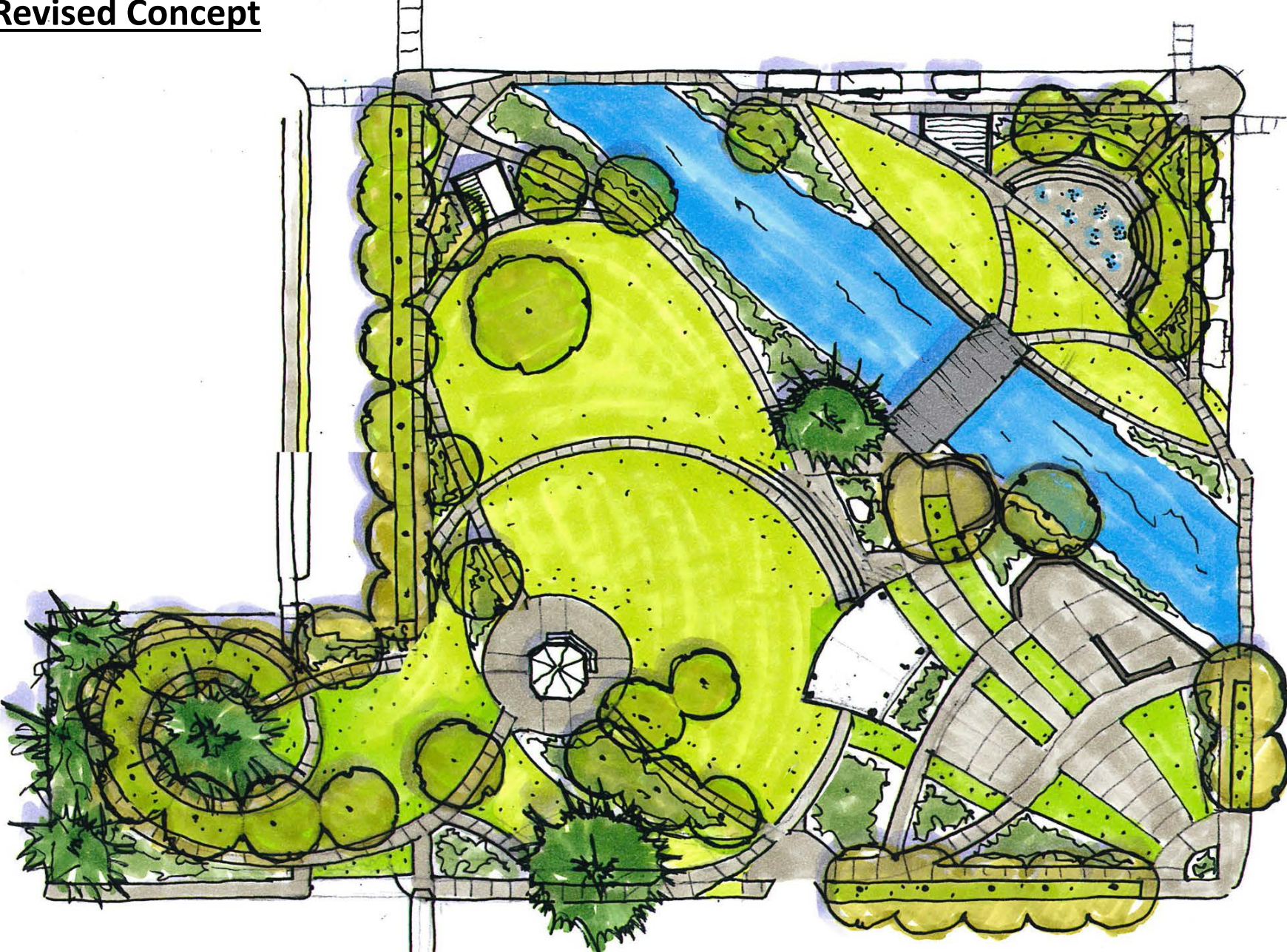
Scheme 3



Scheme 4



Revised Concept



Final Master Plan

- A. Park Extension
- B. Vehicular Turn-around
- C. Bollards
- D. New ADA Ramp
- E. Existing Gazebo
- F. Performance Lawn
- G. Stage/Covered Structure
- H. Rose Gardens
- I. Entrance/Veterans Plaza
- J. Historic Walls
- K. River Overlook
- L. 30' Right Of Way
- M. Bridge
- N. Bathrooms
- O. Water Play / Fountain
- P. Food Cart Parking
- Q. Equipment Room
- R. River Overlook
- S. Park Lighting



Ralston Park Primary Design Recommendations

- Remove the existing gas station and parking lot
- Relocate the public bathrooms
- Remove damaged trees (6 trees)
- Close western end of Maple St. & provide turnaround
- Install proposed path network
- Install proposed pedestrian bridge
- Install new proposed park lighting (60 lights)
- Relocate rose garden (2,226 S.F.)
- Install proposed ramp to existing gazebo
- Install proposed performance space/covered structure
- Install new trees/plantings (25 new trees)
- Install proposed memorial plaza and overlook
- Install proposed kid's play/splash pad
- Canal stabilization at both vehicular bridges
- Provide food cart area/parking



Christmas / Holiday Celebration Recommendations

- All holiday decorations should follow a consistent theme and lighting color. Efforts should be made to reduce variations in conflicting themes, materials, lights, etc.
- All Christmas lights should be warm white bulb (2700k)
- Pole lights should be wrapped in consistent decorative materials (i.e. garland, red ribbon, etc.) and have fastened to the pole a holiday snowflake or consistent decorative element.
- All trees (within a reasonable size) should be decorated with Christmas lighting
- A cut tree should be placed in the "Entry/Veterans" plaza and decorated with lighting
- All structures (gazebo, bridge, stage, bathrooms) should receive lighting and decorative elements

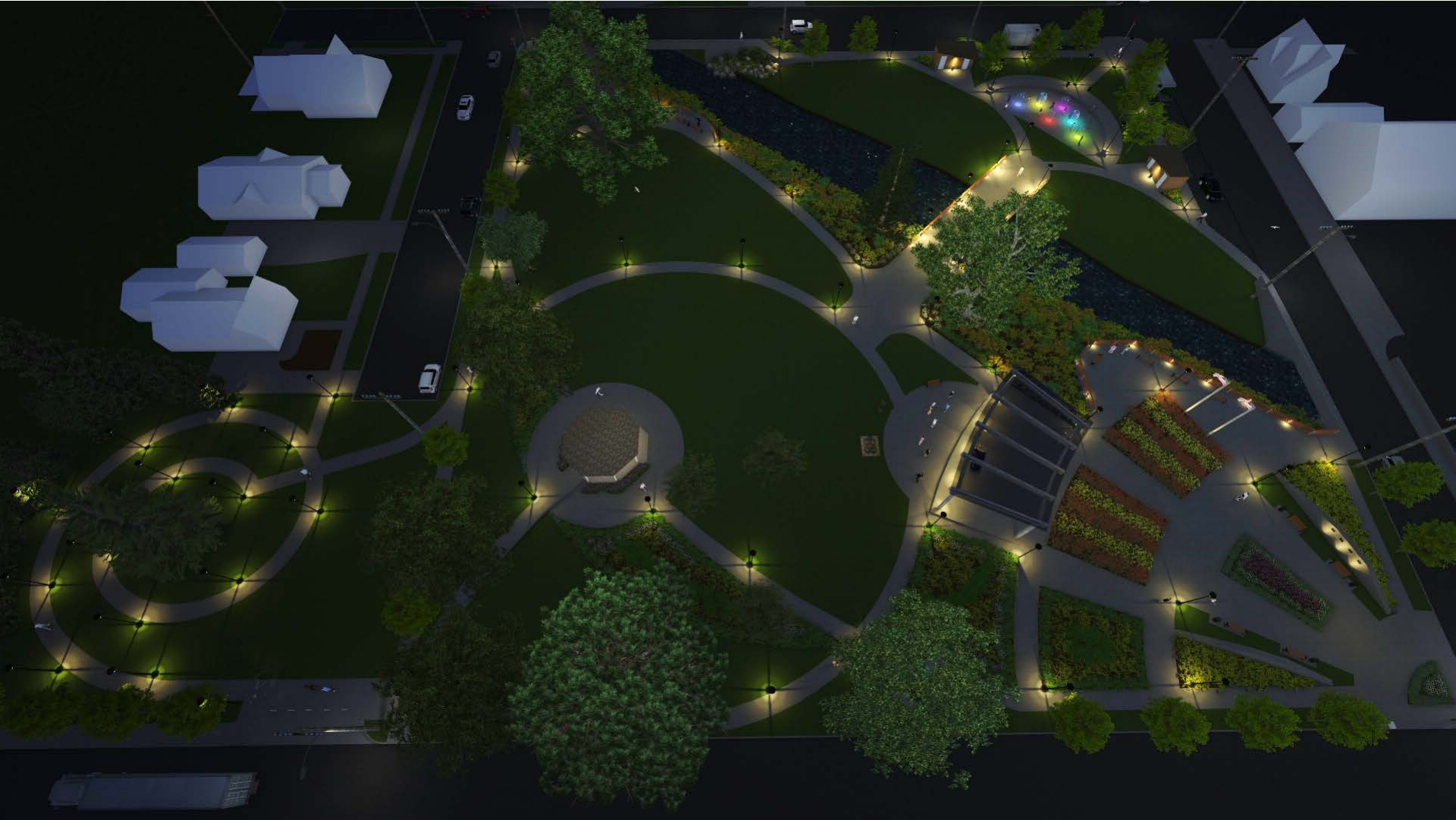






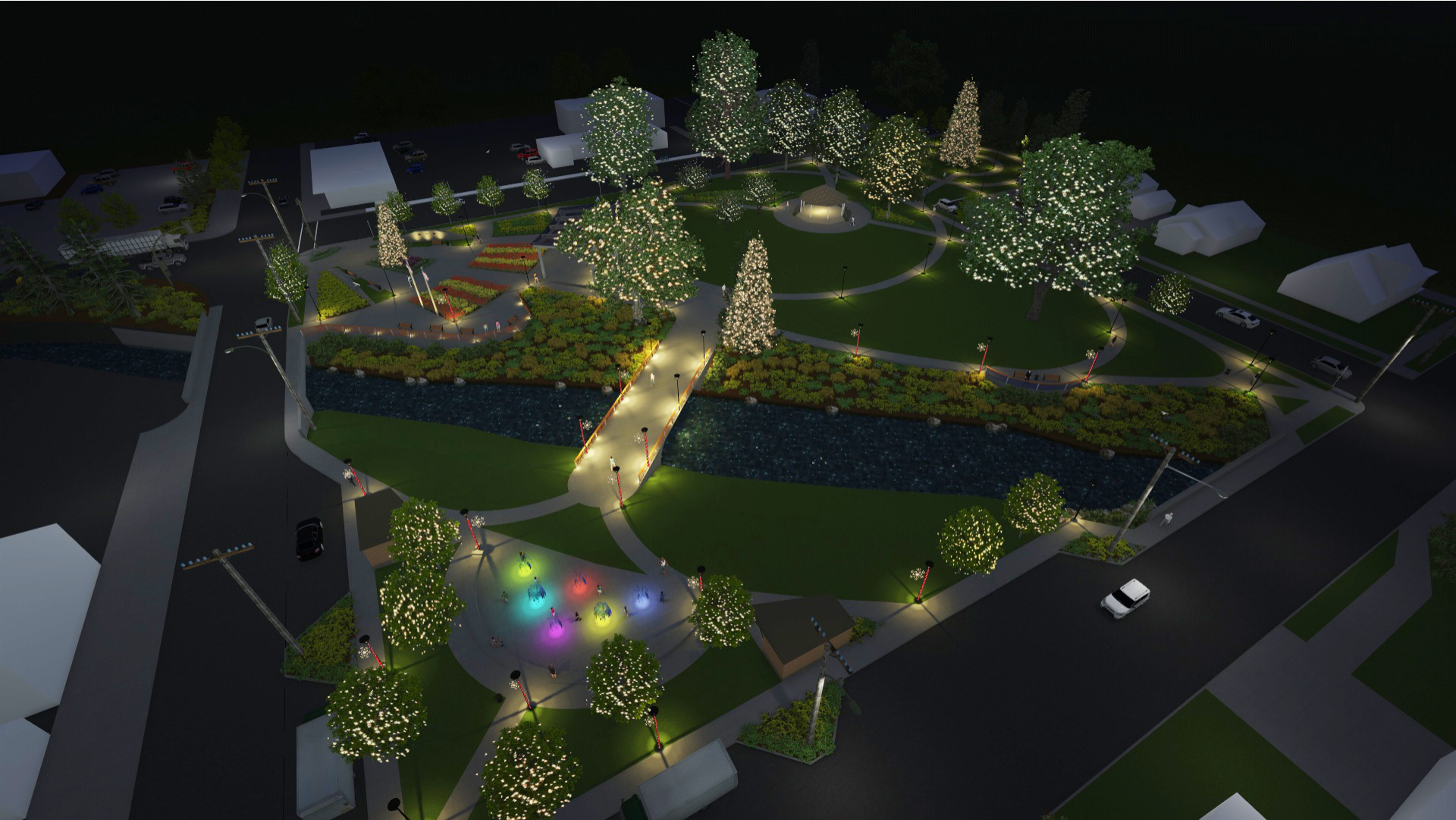












Final Master Plan

- A. Park Extension
- B. Vehicular Turn-around
- C. Bollards
- D. New ADA Ramp
- E. Existing Gazebo
- F. Performance Lawn
- G. Stage/Covered Structure
- H. Rose Gardens
- I. Entrance/Veterans Plaza
- J. Historic Walls
- K. River Overlook
- L. 30' Right Of Way
- M. Bridge
- N. Bathrooms
- O. Water Play / Fountain
- P. Food Cart Parking
- Q. Equipment Room
- R. River Overlook
- S. Park Lighting

