

WARRIOR
1942



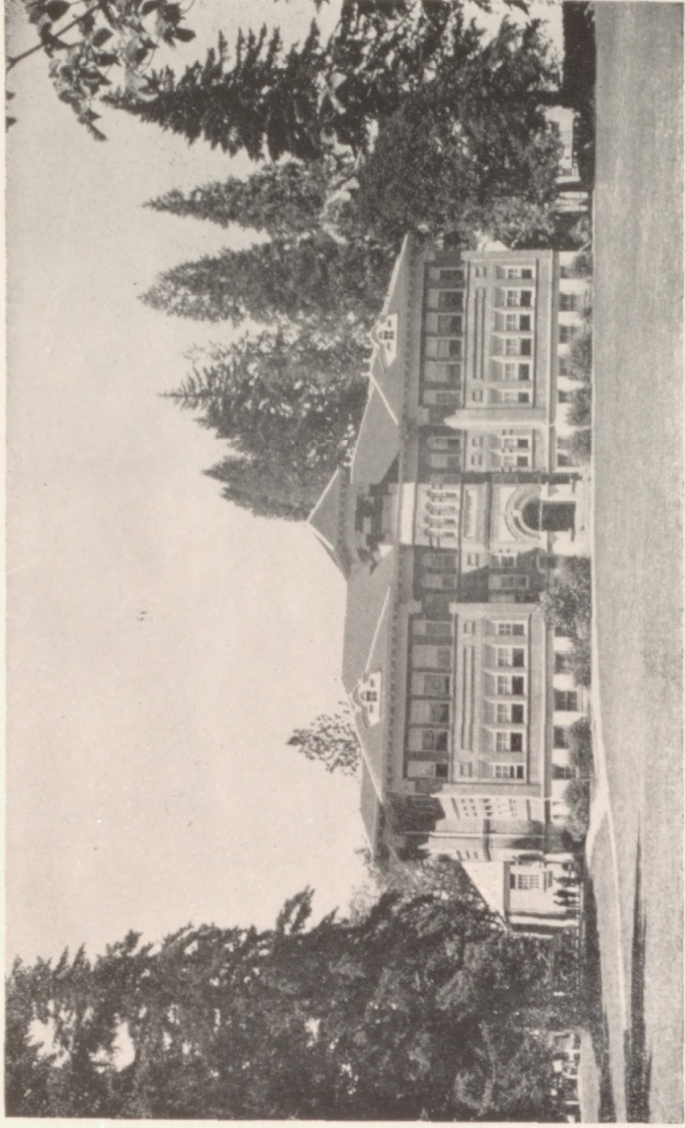
WARRIOR

1942

Published By
ASSOCIATED STUDENT BODY

of
LEBANON HIGH SCHOOL
Lebanon, Oregon

I pledge allegiance to the flag of
the United States of America and
to the Republic for which it
stands—one nation indivisible,
with Liberty and Justice for all.



L. H. S.

Good old Lebanon High School is once more being vacated, this time by 93 seniors, the largest class in the history of our school.

Not only the picturesque school, but also a modern gymnasium, home economics building, and a new vocational shop for the training of men in defense work, stand on the most beautiful campus in the State of Oregon.

For many seniors this will be their last school year, but the memory of Lebanon High will always remain in their hearts.

Among the historic features which are remembered by many pioneers of the west is the bell which tolled over the San-tiam Academy and the "Class Rock," standing in the southeast corner, which designates this as a portion of the old Oregon Trail.



CONTENTS

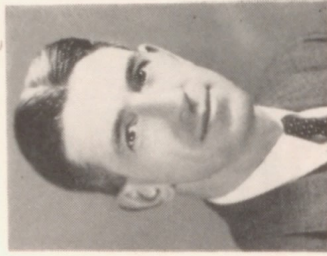
- Administration
- Classes
- Music
- Activities
- Athletics
- Features
- Sponsors

ADMINISTRATION



Faculty

MILTON E. COE
 Superintendent
 Linfield College B.S.
 University of Oregon



IRVIN F. BRYAN
 Principal
 Pacific University B.S.
 University of Washington
 M.A.



EDITH SUING
 Northwestern Business
 College



Duties:
 Secretary for National
 Defense Training



CAROLINE E. MATEJCEK
 State School of Forestry
 Duties:
 Secretary

ELIZABETH AEBISCHER
 Pacific College
 Subjects:
 Social Economics
 Personal Relations
 Health II
 Vocations



C. C. BATES
 Oregon State College
 U. of W.
 P. U. of D.
 Subjects:
 Band Instrumental Music
 in High School and
 Grade School



THEDA A. BINSHADLER
 Oregon State College
 Subjects:
 Social Science



FLOSSIE F. BROWN
 Kansas Wesleyan B.S.
 William and Mary
 California University
 Oregon State College
 Subjects:
 General Science
 Algebra



KEE BUCHANAN
University of Oregon
Subjects:
English



RUTH G. ENDER
University of California
Glendale Junior College
University of Oregon
Subjects:
English
World Geography and
Civilization



VIOLA E. FALLER
Oregon College of Edu-
cation
Subjects: English, Arts
7th and 8th Grade Art



IRA H. FORREY
Oregon State College
Subjects:
Vocational, Agriculture



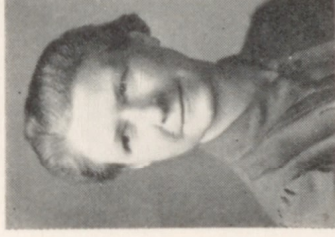
ROY H. HELSER
Linfield College
Subjects:
U. S. History and Gov-
ernment
Physical Education
Coach



HOWARD E. HICKCOX
Huron College
University of Minnesota
Oregon State College
Oregon University
Subjects:
Chemistry
Mathematics
Wood Shop
Metal Shop



ALICE HOLMBACK
University of Oregon
Subjects:
Vocal Department

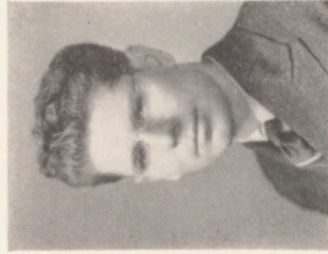


CAROLINE KUNKEL
Pacific University
University of Oregon
University of Idaho
Northwestern School of
Commerce
Subjects:
Typing
Shorthand

LAWRENCE F. PAGE
Oregon State College
Subjects:
Bookkeeping
Shorthand I and II
Personal Relations and
Health
Assistant Coach



MIGNON PHIPPS
University of Oregon B.A.
Subjects:
Art I and II
English I



EMMETT RICKARD
University of Oregon
Northwest Christian
College
Subjects:
Mathematics
Advanced Business
Jr. High Basketball Coach



EDITH SHANKS
Willamette University
Oregon State College
University of Oregon
Subjects:
English
Latin

ALBERT V. SIMONS
Oregon College of Edu-
cation
Subjects:
7th and 8th Grade
Mathematics
7th Grade Science



BARBARA SMITH
Willamette University
Subjects
Physical Education
Biology



CHRISTINE SMITH
Oregon State College
Subjects:
Library



FRANCES WILLIAMS
Oregon State College
Subjects:
Home Economics



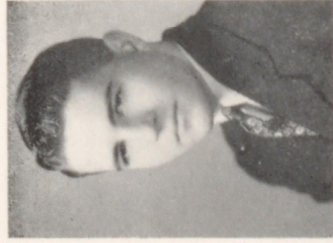
First row—Dillard, Kirkpatrick, Bohle, Stone, Sanders,
 Second row—Wheeler, Edwards, Gentry, B. Miller, A. Miller, Voegelien, Hamilton.
 Third row—Gilbert, Meritt, Cox, Southwick, Irvine, Nichols.

Student Council

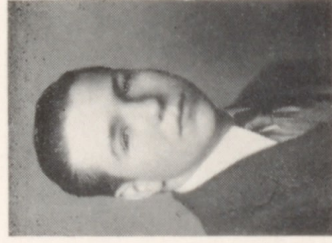
This year the governing body of the school, chosen by the students themselves in their clubs and organizations, has kept the school very well organized and conducted in spite of the many more students which were enrolled in Lebanon High School.

This governing committee is chosen by selecting the president from each class and club, or organization in the school, and a representative from the classes and various organizations.

Regular meetings were held every other Wednesday during sixth period.



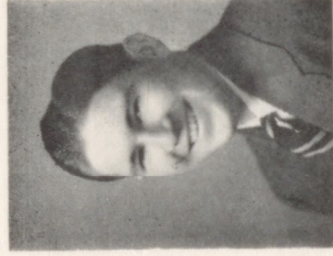
Ashton



Smith



Bohiken



Reeves



CLASSES

Class of '42

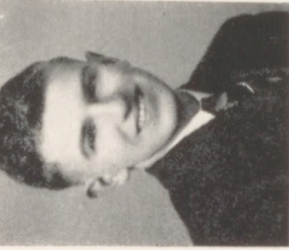
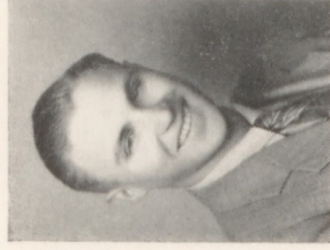
JIM SOUTHWICK

Class President 4; Band 1, 2, 3, 4; Secretary-Treasurer 4; Horn Quartet 2, 3, 4; Hi-Light 3, 4; Sports Editor 3, 4; Editor Annual 4; Library Club 4; Vice President 4; Hi-Y 4; Secretary 4; Pep Club 4; Fire Squad 4; Student Council 4.



NEIL VANDERBURG

Class Vice President 4; Boys Club 1, 2, 3; F.F.A. 1, 2, 3.



BILL OLDS

Basketball 1, 2, 3, 4; Hi-Y Club 4; Class Vice President 3; Class Secretary 4.



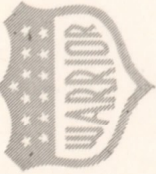
PAULINE SANDERS

Class Treasurer 4; Business Manager Annual 4; D.A.R. Award 4; Yell Leader 1, 2, 3, 4; Girls Trio 3, 4; Student Council 3, 4; Class Secretary 3; Class Play 3; Prom Executive 3; S.O.S. Club 3, 4; G.A.A. 1, 2, 3, 4; President 3; Pep Club 3, 4; Class Secretary 2; Accapella Choir 1, 2; Operetta 1, 2; Home Ec Club 1, 2; Girls League 1, 2, 3, 4.



GERALD WARNKE

Football 2, 3, 4; Co-Captain 4; Boxing 1, 2, 3; Student Council 4; Class Representative 4; Lettermans Club 2, 3, 4.



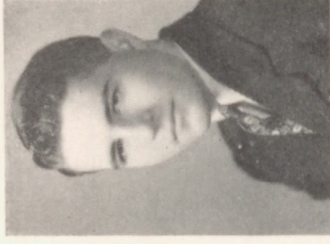
GEORGE ANDERLIK
Hi-Light 4.



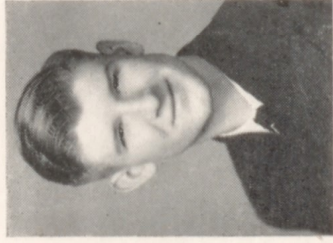
DOROTHY ANDERSON
S.O.S. 4; Girls League 1,
2, 3, 4; G.A.A. 3, 4.



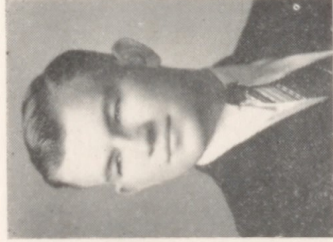
DORIS CAROLINE AYERS
Girls League 1, 2, 3, 4;
Vice-President 3; Big Sister
Chairman 4; Student Coun-
cil 3; Hi-light 4; Library
Club 2, 3, 4; President 3;
Treasurer 4; Home Ec Club
2, 3, 4; S.O.S. 4; Pep Club
3, 4; Drama Club 1, 2, 3, 4.



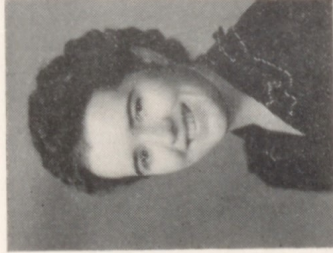
PHIL ASHTON
Student Body President 4;
Football 4; Senior Play 4;
Hi-Y 4; Chaplain 4; Mixed
Octet 4; Boys Quartet 2, 3;
Glee 1, 2, 3; Operetta 1, 2,
3; Boys Glee 1, 2, 3; Ski
Club 4.



JACK BAHRKE
Athletic Manager 2; Foot-
ball 3; Lettermans Club 2,
3, 4.



WARREN BARNTS
Football 2, 3; Boxing 2, 3;
Lettermans Club 3, 4; F.F.
A. 2



ELLA MAE BENSCHOOF
Hi-Light 1; Home Ec Club
1, 2, 3, 4; Pep Club 3;
Girls League 1, 2, 3, 4;
Glee Club 1; Drama Club
3; Operetta 1.



CHARLOTTE BOHLE
Class Treasurer 3; Girls
Trio 1, 2, 3, 4; Class Play
3; Pep Club 3, 4; Home Ec
Club 2; Band 1, 2, 3, 4;
Vice President 4; Secretary
2; A'capella Choir 1, 2, 3,
4; Girls League 1, 2, 3, 4;
Representative 2; G.A.A. 2,
3; Prom Chairman 3; Class
Play 4; Operetta 1, 2, 3, 4;
Student Council 3, 4; Girls
Glee 1, 2, 3, 4; Dance
Band 2, 3, 4; Clarinet
Quartet 1, 2, 3, 4.

MARCEIL BOHLKEN

Student Body Secretary 4;
Student Council 2, 3, 4;
Home Ec Club 1, 2, 3, 4;
Treasurer 1, 2; President 3;
Library Club 2, 3, 4; Vice
President 3; President 4;
Pep Club 2, 3, 4; President 4;
2; Drama Club 1, 2, 3, 4;
G.A.A. 2, 3, 4; S.O.S. Club
4; Girls League 1, 2, 3, 4;
Class Play Manager 3.



NAN BROWN

A'capella Choir 2, 3, 4;
Glee 1, 2, 3; Drama Club
4; Operetta 2, 3; Girls
League 1, 2, 3, 4; Home
Ec Club 1; Pep Club 2;
G.A.A. 2.



MARY ELLEN BRYANT

Girls Glee 3, 4; A'capella
Choir 4; Operetta 3; Cheer
Leader 4; Pep Club 2, 3, 4;
Girls League 1, 2, 3, 4;
Sextet 3.



LYNN CALAHAN

Band 1, 2, 3, 4; Vice Presi-
dent 3; A'capella Choir 1,
2, 3, 4; Operetta Cast 1,
3; Drama Club 2; Dance
Band 2, 3, 4.

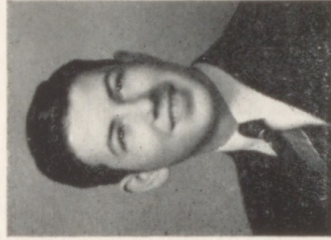
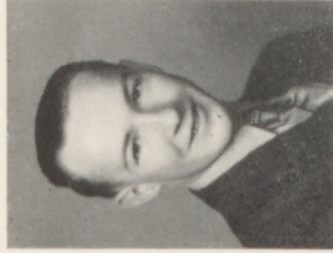
LOIS CARROLL

Girls League 4; Class Sec-
retary 1, 2, 3; Glee Club
1, 2.



FRANK CAWRSE

Fire Squad 2, 3, 4; F.F.A.
1, 2, 3, 4; Drama Club 2,
3; Field Patrol 4; F.F.A.
Basketball 4; F.F.A. Soft-
ball 3, 4.



KENNETH CHRIST

Baseball 3, 4; Lettermans
Club 3, 4; Class Officer 2.



NORMA COLLINS

S.O.S. Club 4; Girls League
1, 2, 3, 4.



DONNA COOPER
Home Ec Club 1; Girls League 1, 2, 3, 4; A'capella Choir 4; Pep Club 2, 3.



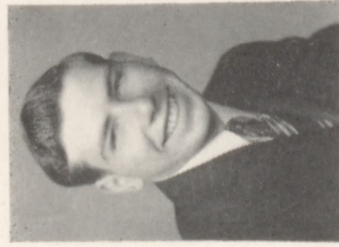
CATHERINE CRABTREE
Hi-Light 3, 4; Assistant Business Manager 3; Business Manager 4; Home Ec Club 1, 2, 3, 4; Pep Club 2, 3, 4; Latin Club 2, 3, 4; Girls League 1, 2, 3, 4; Library Club 2, 3; G.A.A. 1, 2, 3, 4; Drama Club 2, 3; Glee Club 3, 4.



DON DARLING
F.F.A. 4; Fire Squad 4.



VIVIAN DAHLGREN
Pep Club 4; G.A.A. 1, 2, 3; Astor Past 1, 2; Livewire 1, 2, 3; Deans Officer 1, 2; Tumbling Team 2, 3; Pep Club 1; Glee 1, 2; Girls League 4.



DICK DE KUYPER
Track 1; Baseball 4.



RUTH DENT
Drama Club 1; Pep Club 1, 2; A'capella Choir 1; Girls League 1, 2, 3, 4.

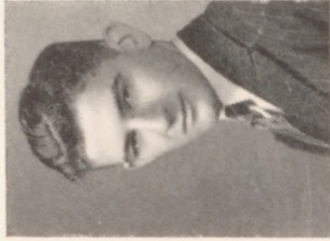


ARTHUR DICKEY
Drama Club 4; Football 4; Basketball 3.



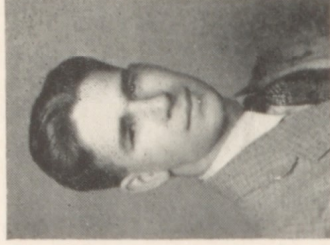
CONNIE ELLIOTT
Vice President of Class 1; Drama Club 4; Girls League 1, 2, 3, 4; Home Ec Club 2; Representative 1; Pep Club 2.

JIM ELLIOTT



BERNELL ERSKINE

F.F.A. 1, 2, 3, 4; F.F.A. Reporter 3; Fire Squad 1, 2, 3, 4; Hi-Light 3, 4; Boxing 3; Drama Club 3.



PATRICIA FORREY

Home Ec Club 2, 3, 4; Secretary 3; Pep Club 2, 3, 4; Glee Club 1, 2, 3; Girls Quartette 3; Operetta 1, 2, 3; Band 1, 2, 4; Clarinet Quartette 4; Girls League 1, 2, 3, 4; Christmas Play 2, 3, 4.

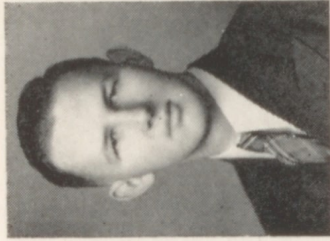


ADA GAYLORD

Girls League 1, 2, 3, 4.

RAYMOND DAN GILBERT

Band 1, Glee 2, 3, 4; Boys Quartet 2; Class Play 3; President Glee Club; Mixed Octette 4; Operetta 2, 3; Class Play 4.



DOROTHY GRABLE

Girls Trio 2, 3, 4; President Glee Club 3; Operetta 2, 3, 4; Girls Sextet 1; Girls Glee 1, 2, 3, 4; Acapella Choir 1, 2, 3, 4; Class Representative 3; Home Ec Club 1, 2; Pep Club 1, 2, 3, 4; Girls League 1, 2, 3, 4; Ski Club 3, 4; G.A.A. 1, 2, 3; Drum Majorette 3.



BILL GREEN

Band 1, 2, 3, 4; Brass Sextet 1.



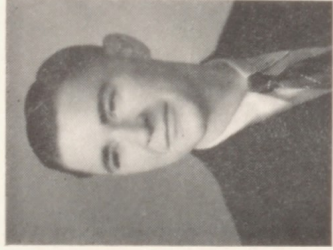
DELBERT C. HAMMETT

F.F.A. 1; Boxing 2; Football 3; Lettermans Club 3; Baseball 3.





BEULAH MAE HARDY
Girls Glee, 3; A'capella
Choir 4; Operetta 3; Pep
Club 2, 3, 4; Girls League
1, 2, 3, 4; Home Ec Club
2; Sextet 3; Class Play 3, 4.



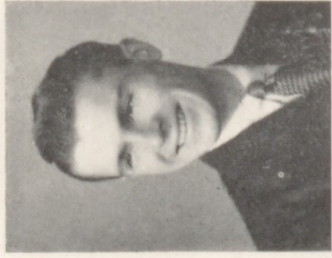
CHARLIE HESTER
F.F.A. 3, 4; Class Play 1.



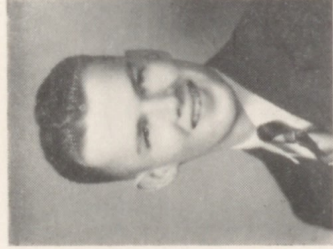
CECIL HEYNE
F.F.A. 1, 2, 3, 4; Fire Squad
4; Baseball 2, 3, 4; F.F.A.
Basketball 4; Drama Club
3.



ANNA LEE HOLLINGSWORTH
Home Ec Club 1, 2, 3, 4;
Historian 3; Custodian 4;
Pep Club 2, 3, 4; Drama
Club 3, 4; Girls League 1,
2, 3, 4; Christmas Play 4.



LAWRENCE HOUSEN
Fire Squad 2, 3, 4; F.F.A.
1, 2, 3, 4; Treasurer 3; Sec-
retary 4.



TIM IRVINE
Basketball 1, 2, 3, 4; Base-
ball 2, 4; Lettermen's Club
1, 2, 3, 4; Yell Leader 2, 3;
Band 1, 2, 3; President 3;
Pep Club 2; Ski Club 2;
Athletic Manager 1.



HELEN JONES
Home Ec Club 1, 2, 3; Sec-
retary 2; Library Club 4;
Band 1, 2, 3, 4; Point Sec-
retary 4; Student Council
2, 3; Pep Club 1, 2, 3, 4;
S.O.S. 4; Girls League 1,
2, 3, 4; Class Representa-
tive 3; Class Play 3, 4.



JANET KEEBLER
Trio 1, 2, 3, 3, 4; A'capella
Choir 1, 2, 3, 4; Secretary-
Treasurer 3, 4; Girls Glee
1, 2, 3, 4; Operetta 1, 2, 3;
Band 1; Double Quartet 4;
S.O.S. Club 4; Secretary-
Treasurer 4; Class Play 4;
Girls League 1, 2, 3, 4;
Pep Club.

LOIS KEYSER

Latin Club 3, 4; Treasurer 4; Pep Club 2, 3, 4; G.A.A. 2, 3, 4; Girls League 1, 2, 3, 4; Hi-Light 3; Glee Club 2.



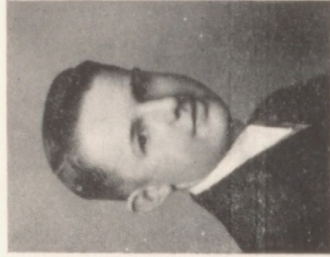
NANCY KIRKPATRICK

Girls League 1, 2, 3, 4; Representative 1, 3; Secretary 2; President 4; Band 1, 2, 3, 4; Brass Sextet 1; Horn Quartette 1, 2, 3, 4; A'capella Choir 1, 2, 3, 4; Vice President 3; Girls Glee Club 1, 2, 3, 4; Girls Trio 1, 2, 3, 4; Operetta 1, 2, 3; Mixed Quartet; Latin Club 2, 3; Pep Club 2, 3; Treasurer 2; Ski Club 3; Student Council 4; S.O.S. 4; Class Play 4.



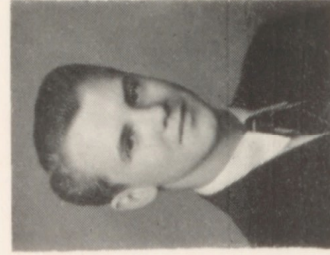
WILMER LESSARD

Class Play 3; Drama Club 4; Student Body Play 2.



CHARLIE LONG

Baseball 3, 4; Basketball 4; Lettermans Club 3, 4; Glee Club 2, 3, 4; Boxing 3; Art 2, 3.



LOUISE LONG

Latin Club 2, 3, 4; Vice President 4; Home Ec Club 2, 3, 4; Custodian 3; Girls League 1, 2, 3, 4.



JOE MANGOLD

Basketball 3, 4; Baseball 3, 4; Football 4; Lettermans Club 3, 4; Vice President 4; Class Play 4.



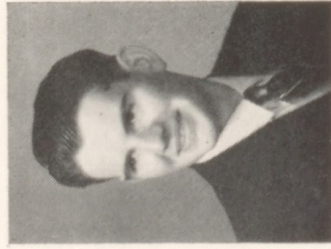
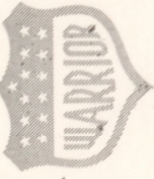
PAULINE MCTIMMONDS

Home Ec Club 1, 2, 3; Girls League 1, 2, 3, 4; Pep Club 2, 3; Drama Club 1, 2, 3, 4; G.A.A. 1, 2, 3; Operetta 1; Class Play 3.



BETTE MILLER

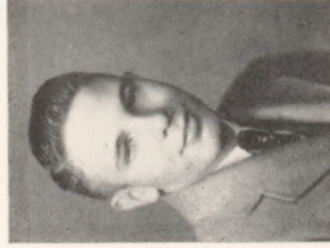
Pep Club 3, 4; President 4; Girls League 3, 4; S.O.S. 4; Student Council 4.



HERBERT MILLER
F.F.A. 2, 3, 4; Fire Squad
2, 3, 4.



DOROTHY MILES
Home Ec Club 1, 2, 3, 4;
Secretary 4; Girls League
1, 2, 3, 4.



JIM MOULTON
Football 2, 3, 4; Baseball
1; F.F.A. 2; A'capella Choir
4.



RICHARD MORRIS
Transferred to U. S. Navy.



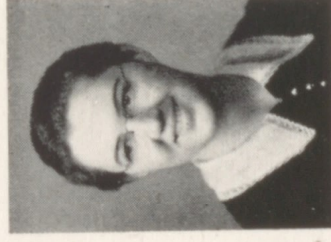
EVELYN MONTGOMERY
Girls League 1, 2, 3, 4;
Home Ec Club 3, 4; Pep
Club 3; G.A.A. 1, 2, 3, 4.



DOROTHY NOZIGER
Girls League 1, 2, 3, 4.



JIM NICHOLS
Student Council 2, 3, 4;
F.F.A. 1, 2, 3, 4; President
4; Football 1, 2, 3; Class
President 3; Class Repre-
sentative 2; Fire Squad 2,
3, 4; Timekeeper 4.



ROBERT MOERSCH

LYDIA O'HEARN

Home Ec Club 1; Glee Club 1; Manual Training Club 1; Girls League 1, 2, 3, 4.



NINA OWEN

Glee Club 1; Girls Glee 1; Pep Club; Secretary 2; Home Ec Club 1, 2, 3; Sec-3, 4; A'capella Choir 3, 4; Operetta 1, 3; G.A.A. 3; Girls League 1, 2, 3, 4; Latin Club 2; Class Play 4.



DOLORES PETTIJOHN

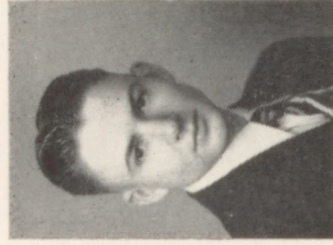
Elmanac 3; Cloquallum 3; Class Play 3; Girls Club 1, 2, 3; S.O.S. 3, 4; Girls League 3, 4.



WALTER POSTLE

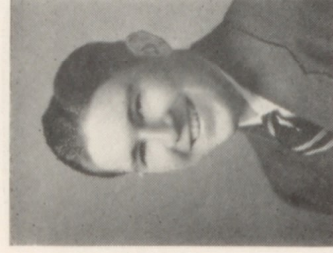
Boxing Captain 3; Boxing 1, 2, 3; F.F.A. 3; Glee 1; Operetta 1.

JACK POWELL



BILL REEVES

Class President 1; Baseball 1, 2, 3, 4; Basketball 1; Manager 2; Ski Club 3, 4; Vice President 4; Hi-Y 3; Lettermans Club 1, 2, 3, 4; A.S.B. Treasurer 4.



MARTHA JANE ROSE

Girls League 1, 2, 3, 4; Home Ec Club 1, 2, 3; Pep Club 2, 3.



RODERICK L. SAVAGE

Band 1, 2, 3, 4; Dance Band 4; Trumpet Quartet 4; Library Club 3; Drama Club 3; Brass Choir 3.



NANCY SHULTZ

Torch and Laurel Scholarship Society 1, 2; California Scholarship Federation 3; Girls League 1, 2, 3, 4; Basketball 1, 2, 3; Arts and Crafts Club 1.



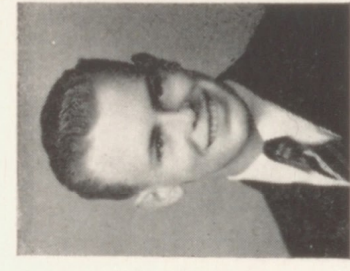
LOUISE SHERFY

Girls League 1, 2, 3, 4; Glee Club 1; Operetta 1; Pep Club 3; Drama Club 4.



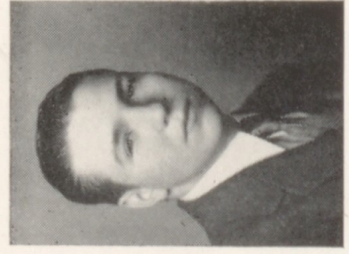
BOB SHORES

Hi-Y 3, 4; Secretary-Treasurer 3; President 4; Student Council 4; Glee 1, 2; Basketball 1, 2, 3; Drama Club 3; Class Play 3; Ski Club 4.



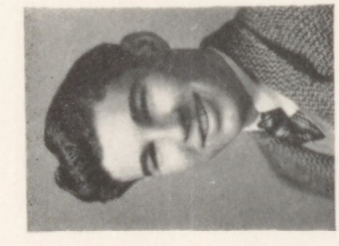
CLAIR SMITH

Football 2, 3, 4; Boxing 3.



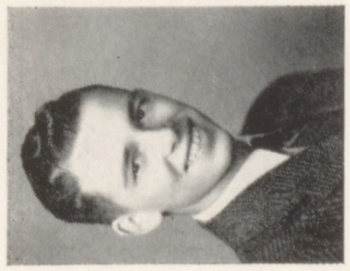
LARRY SMITH

Football 1, 3; Basketball 2; Boxing 2; Latin Club 3; Boys Service Council 3.



ELIZABETH SPEASL

Girls League 1, 2, 3, 4; Student Council 4; Home Ec Club 1, 2, 3, 4; President 4; Glee Club 1, 2; A'Capella Choir 3, 4; S.O.S. 1, 2, 3, 4; Operetta 1, 2, 3; Girls' Glee 1, 2, 3, 4; S.O.S. Vice President 1.



BOB SMYTH

Transferred to U. S. Navy.



CLINTON SMITH

Football 1, 2, 3, 4; Captain 4; Baseball 1, 2, 3, 4; Lettermans Club 1, 2, 3, 4; President 4; A.S.B. Vice President 4; Hi-Y 4; Class Play 4; Student Council 4.

WILMER STECKLY



FRANCES MORRIS STOCK
Girls League 1, 2, 3, 4;
S.O.S. Club 4; President 4;
Student Council 4; Drama
Club 1, 2; G.A.A. 1, 2, 3;
Pep Club 3, 4; Class Play
3.



BEULAH SYLVESTER
Home Ec Club 1;
League 1, 2, 3, 4.

HELEN STOWE

Home Ec Club 1, 2, 3, 4;
Secretary 1; President 2;
Historian 4; Class Repre-
sentative 1; Student Coun-
cil 1, 2; Pep Club 3, 4;
Drama Club 1, 2, 3, 4;
Vice President 3; Library
Club 4; Girls League 1, 2,
3, 4; Pep Committee 4;
Glee Club 1; S.O.S. Club
4; Secretary 4; Operetta 1;
Class Play 3; Class Play 4.

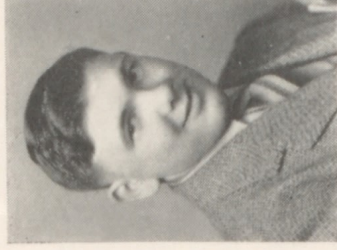


MILDRED STRYKER

G.A.A. 2, 3, 4; Girls
League 1, 2, 3, 4; Library
Club 4; Drama Club 3, 4;
Pep Club 3, 4; Home Ec
Club 1, 2, 3, 4; Custodian 2.

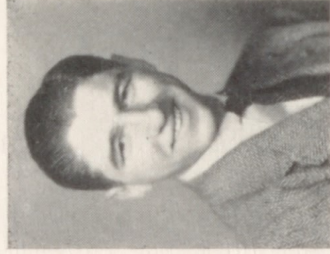


BEULAH SYLVESTER
Home Ec Club 1;
League 1, 2, 3, 4.



ROBERT THOMA

Basketball 2, 3, 4; Foot-
ball 2, 3, 4; Baseball 2, 3,
4; Lettermans Club 2, 3, 4.



BUD TROM

Baseball 4; Basketball 1,
3, 4; Football 1, 3, 4; Band
1, 2, 3, 4; President 1, 3;
Assistant Director 4; Stu-
dent Council 3, 4; Letter-
mans Club 3, 4; Represent-
ative 4; Hi-Y 3, 4; Sergeant
at Arms 4; Tumbling Club
1; Vice President 1; Track
1; Hi-Light 1.



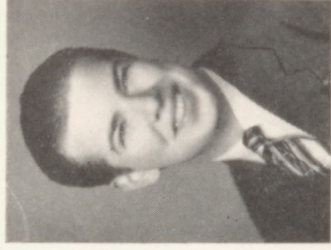
EMERY E. TOWNSEND

Baseball; Football; Basket-
ball; Boxing.



NORMA WALKER

Hi-Light 2, 3, 4; G.A.A. 1, 2, 3; Latin Club 2; Glee Club 2; A'capella Choir 3, 4; Girls Glee 3, 4; Girls League 1, 2, 3, 4.



LESLIE WERTZ

Hi-Light 2, 3, 4; Glee 1, 2; A'capella Choir 3, 4; Library Club 1, 2, 3, 4; Drama Club 4; Boy's Glee 3, 4; Boy's Octet 3, 4; Transferred to U. S. Marines.



SCOTT WHEELER

F.F.A. 1, 2, 3, 4; Secretary 3; State Farmer 3; U. P. 4; B. B. Manager 3, 4; P.I.L.E. 4; Hi-Y 3, 4; Treasurer 4; Hi-Light 3, 4; Fire Squad 3, 4; Chief 4; Student Council 3, 4; Drama Club 3, 4; Treasurer 4; Library Club 4; Boys Service Council 2, 3; Secretary 3.



ARDYS WHESTONE

Girls League 1, 2, 3, 4; Treasurer 3; Representative 4; Latin Club 2, 3; Vice President 3; Pep Club 1, 2, 3; Home Ec Club 2, 3; G.A.A. 1, 2, 3; Ski Club 3, 4; Drum Majorette 3; Hi-Light 3, 4; Assistant Business Manager 3; Business Manager 4; S.O.S. 4.



IRENE WIBERG

Volleyball 1; Softball 1; Basketball 2; Girls League 4; Band 1, 2, 3; Glee Club 1; Drama Club.



ROY WIBERG

F.F.A. Basketball 4; F.F.A. 4.



DORIS M. WILEY

Pep Club 1, 2, 3; President 3; Class Play 3; Home Ec Club 4; Girls League 4; Girls Glee 4; Drama Club 4; A'capella Choir 4.



KENNY WILSON

Class Play 4

Senior Class History

Last year when the school term again convened, we found ninety-six seniors entering Lebanon High for the last time. Not always has it been that these students have been seniors, so let us just glance back through the years and look in on these last year students of Lebanon High.

On September 12, 1938, the class of '42 first entered Lebanon High School with 145 freshmen enrolling. After being duly initiated they assumed the role as regular students.

The following freshman class officers were chosen under the class advisorship of Miss Schiltz: President, Bill Reeves; Vice-President, Charlie Long; Secretary-Treasurer, Bill Fredericks; and Representative, Helen Stowe.

In this freshman class many talents were discovered not only in the band and glee clubs, but also many boys proved natural sports ability on the athletic field.

On September 18, 1939, another school began with 121 of the former freshmen returning to take up the roles as sophomores in Lebanon High School. Under the leadership of Miss Coon the class elected the following officers: President, Leon Carter; Vice-President, Charles Long; Secretary, Pauline Sanders; and Treasurer, Floreine Edwards.

The sophomore class was well represented in the band but even more so in the glee club. The Girls' Trio, composed of Dorothy Grable, Charlotte Bohle, and Janet Keebler won high praise as talented singers. Raymond Gilbert and Phil Ashton were both credited with singing in the Boys' Quartet. Nancy Kirkpatrick, Charlotte Bohle, and Janet Keebler had speaking parts in the operetta, "The Mikado" given by the Glee Club.

In sports the sophomores made an excellent rating, six boys receiving a letter in one or more of the three major sports.

Each year the '42 class seemed to diminish in size and on September 9, 1940, only 108 juniors enrolled in Lebanon High School. Mr. Scott was the class advisor and under the leadership of Jim Nichols, President; Bill Olds, Vice-President; Pauline Sanders, Secretary; and Charlotte Bohle, Treasurer, the juniors had a very successful year.

The juniors presented the annual class play of "Bashful Bobby" with Bob Shores, Charlotte Bohle, Catherine Crabtree, Bob Smyth, Raymond Gilbert, and Helen Stowe portraying the leading roles. Mr. Scott was the director.

A great need for money was arising. Why? To sponsor the Junior-Senior Prom, which was the greatest and most successful event of the year which honored Queen Lorelie and her royal court. The theme was carried out in Dutch style with an Albany band furnishing the music for the evening.





The operetta, "Pirates of Penzance," was well represented by the juniors with Nancy Kirkpatrick, Phil Ashton, Janet Keebler, Charlotte Bohle, Raymond Gilbert, Leslie Wertz, and Dorothy Grable taking leading roles and many other juniors sang in the chorus.

The class of '42 now had a great many well qualified athletes, namely Joe Mangold, Bud Trom, Denny Miller, Clinton Smith, Bob Thoma, Charles Long, and Gerald Warnke.

On September 15, 1941, 98 seniors entered the halls of Lebanon High School, proud to claim the title as seniors, but perhaps just a little sad that this was their last year.

With Miss Aebischer as class advisor, the following class officers were chosen: President, Bob Smyth; Vice-President, Jim Southwick; Secretary, Pauline Sanders; and Treasurer, Bill Olds.

This year the senior class was well represented by several orators. Charlotte Bohle, Nina Owens, and Raymond Gilbert participated in the American Legion contest. Charlotte won the county contest and entered the district contest in Beaverton.

On April 10, under the able direction of Kee Buchanan the senior class play was presented. It was a modern, fast-moving "Young Adventure" play. Raymond Gilbert, Catherine Crabtree, Clinton Smith, Nancy Kirkpatrick, Charlotte Bohle, Joe Mangold, Phil Ashton, Beulah Hardy, Helen Stowe, Helen Jones, and Nina Owens portrayed parts.

The seniors were again well represented in sports with several winning letters in as many as three sports.

Baccalaureate will be held on May 24, and the following Wednesday, May 27, commencement will be held and these 93 seniors will leave Lebanon High School.

A lost feeling descends on the seniors as they plan to leave their dear old Alma Mater. With a definite desire in each senior's eyes to reach the top of the ladder, they look into the future and hope that "Success" will be the finale of each senior. To each of these graduating seniors, "Good Luck!"



Senior Class Play

Above is the picture of the 1942 Senior Class play, "Young Adventure," a youthful, fast moving drama of the teen age, written by Savage and McRoe, which was presented May 10, in the High School Gymnasium.

Nancy Kirkpatrick played the leading feminine role, opposed by Kenneth Wilson.

Other members of the cast were Clinton Smith, Charlotte Bohle, Joe Mangold, Beulah Hardy, Phil Ashton, Helen Stowe, Helen Jones, Nina Owens, Catherine Crabtree, and Raymond Gilbert.

During intermissions musical entertainment was provided by the high school band.

The play was under the direction of Miss Kee Buchanan.



First row—Lenox, Irvine, Fiala, Sorseth, Warnke, Liggett, Brown, Hammett, Stewart, Stone, Miller, Leitler.
 Second row—Stowe, Adamson, McClain, Gentry, Smith, Davis, McElhiney, Dwyer, Kau, Rudisil, Yagen,
 Post, North.
 Third row—Burford, Nelson, Ohm, Pynch, Hauxwell, Wood, Heyne, Vanderburg, Spohn, Notziger, Riddle.
 Fourth row—Phillips, Saxton, Calahan, Giblin, Hartle, Carlson.
 Fifth row—Fields, Lamp, Downing, Carlson.
 Sixth row—Lee, Paetsch, McBurney, Manuel, Ray.

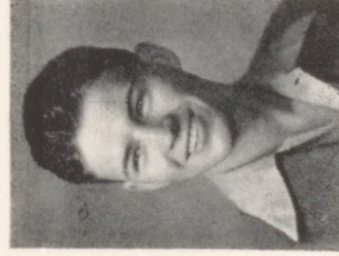
Junior Girls

The junior girls are a very intelligent and fun-loving group. Each one has taken part in some outside activity. For instance, the girls had a volleyball team which was champ, above all others in school. They also had a basketball team which placed high on the athletic ladder.

These girls also take an active part in all club activities.



REID MERITT
 President



DON COX
 Vice President



ARLENE McPHERSON
Secretary



SHIRLEY DILLARD
Treasurer

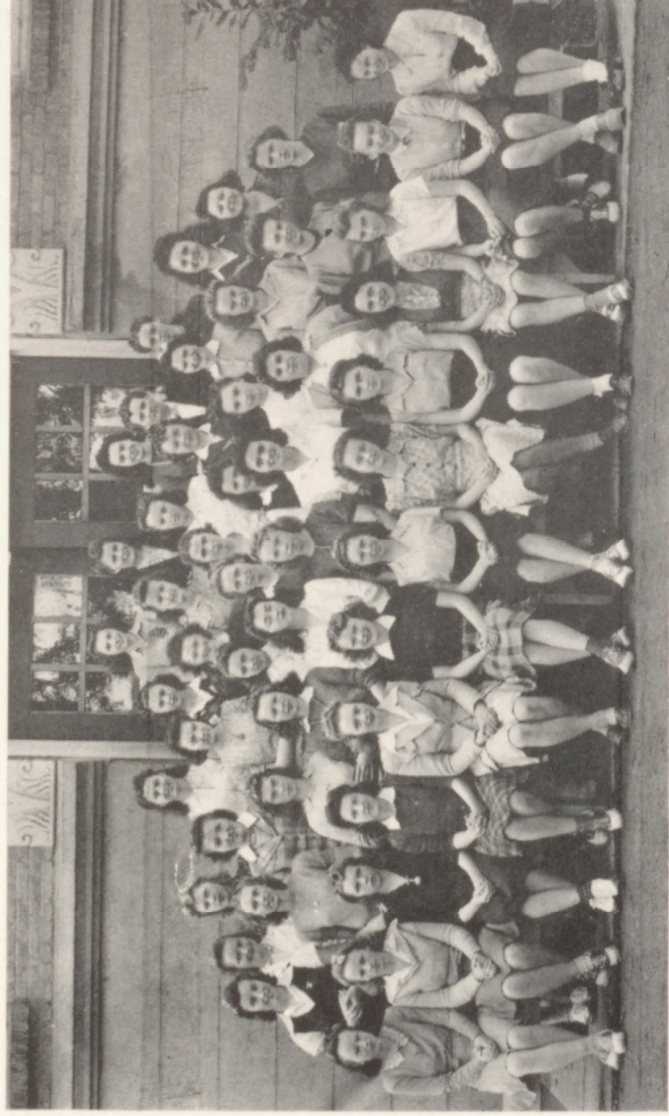
Junior Boys

This year the Junior Class carried out its many activities very successfully. Perhaps the most significant and superior event of the year was the Junior Carnival, differing from the usual class plays held in the preceding years.

Many members of the class were active in athletics, band, glee club, Hi-Light, Hi-Y, and other activities throughout the school year.



First row—Smith, Crane, Burge, C. Jennings, Cook, T. Daily, Manela, Rucker, Ensley.
Second row—Bremer, James, Berry, O'Hearn, Cuttis, Shephard, Harden, Green, Estep.
Third row—A. Jennings, Boggs, Neustel, Dempsey, King, Willson, Erskine.
Fourth row—K. Daily, Calahan, Klient, Grogan, Nichol.
Fifth row—Housen, Herr, Wiley, Johnson, Fennell.
Sixth row—Ryan, Roberts, Townsend.

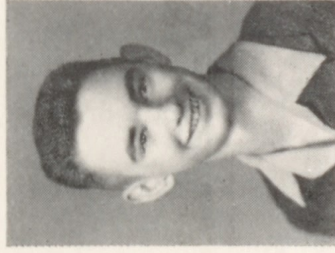


First row—Dunckley, Hodges, Larson, Cray, Collins, Hindman, Latdlaw, Firchau, Tancre, Rose, Olson, Raines, Christ.
 Second row—Bowen, Benton, Stryker, Dent, Beale, Farrell, Whiteis, Gresham, Austin, Kruml.
 Third row—Mitchell, Heyne, Hensen, Fuller, Sherty, McFlimmonds, Miles, Gilbert.
 Fourth row—Miller, Reeves, Smith, Stringer, Myler, Brown.
 Fifth row—Christ, Patterson, Pape, Marquardt, Bilyeu, Adamson.
 Sixth row—Reeves, Smyth, Voegelein.

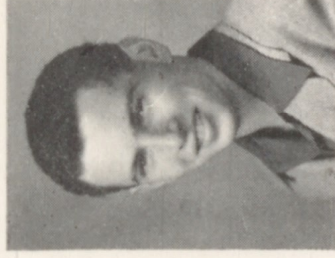
Sophomore Girls

The sophomore girls spent a very enjoyable year and were very active in many activities.

A number of the girls played on the basketball teams to earn their points for G. A. A. They were also active in Girls League with Louise Kruml as secretary and Kathryn Voegelein as class representative. Other sophomore girls helped on the Girls League committees. They were also well represented in band and glee work this year.



RALPH COOPER
 President



DICK BRYANT
 Vice President

LOIS COLLINS
Secretary



KATHLENE PATTERSON
Treasurer



Sophomore Boys

Members of the Sophomore Class this year took part in athletics, band, Hi-Y, glee, and many other activities of the school.

During the middle of the year they went to Albany on a skating party, which was later followed by other classes.



First row—Robertson, C. Ensley, Wiberg, Wilson, O'Brien, Plagmann, Carlson, Huber, Schrock,
Second row—Woods, Beach, Gardner, Kimble, Koepke, Baxier, Uiford.
Third row—Shindler, Sylvester, Clarke, Elliott, Keyser, Bennington, Cockley, Heyne.
Fourth row—Lanning, Connelly, Carpenter, Miller, Pearson, Miles, Durlam, Roe, Hainz, Crandall.
Fifth row—Ray, Bartruff, Fisch.
Sixth row—Bahrke, Firschau, Erickson, Cox.



First row—Clarke, Hurst, Crabtree, Rose, Kau, Benton, Kauffman, Ford, Irvine, Whelcn, Croner, Eubank, Fiald, Ames, Kimble.
 Second row—Neustiel, Housen, Schliske, Adams, Devlin, Kirk, Cobb, Iverson, Rogers, Collins, York, Warner, Hayes, Carter.
 Third row—Bazant, Richards, Grogan, Cutts, Craig, Burlison, Keebler, Pierce, Crockett, Jennings, Taber, Fillpot, Powell.
 Fourth row—McTimmonds, Gilbert, Sorseth, Southwick, B. A. Sylvester, A. Sylvester, Nolan, Erickson.
 Fifth row—Kamph, Fleming, Miller, Larson, Leever.
 Sixth row—Clymer, Giblin, Nolan, Smith.

Freshman Girls

The chief social event of the class was the program held by the freshman class in the fall. The freshman girls also participated in most of the activities around the school which include the clubs, band and glee.

Officers for the class were: Jack Hyder, President; Cedric Wallace, Vice-President; Carol Penfold, Secretary; Bob Bauman, Treasurer.



CEDRIC WALLACE
 Vice President

BOB BAUMAN
Treasurer



Freshman Boys

The Freshman Class had a very nice and entertaining group of parties during the year, which included the fall party in the high school gymnasium, that was one of the best parties of the year. Next was the skating party which took place at Albany. This also brought a big turnout of students.



First row—Netland, Bristol, Crossan, Fisher, Edwards, Ellis, Estep, Powell, Hoage, Olds, Daily, Fisher,
Johnson, Brunswick, Canoy.

Second row—Schrock, Gangle, Webb, Haven, Ball, Bartels, Rountree, Chastain, White, Humphreys,
Ball, Alley.

Third row—Rieke, Firschau, Ferguson, Michelson, Shultz, Coakley, Harvey, McKinney, Cutts.

Fourth row—Beckel, Ryder, McCormick, Haven, Cox, Ray, Bellingier, Wilkinson, Mitchell, Ayers.

Fifth row—Davidson, McLean, Hyder, Coe.



First row—Daily, Smyth, Gleason, Beach, Bartels, Hardy, Carlson, Boyes, Beyer, Cooper, Prince, Richards, Grandel.
 Second row—Stowe, Coseman, Hewett, Lindley, Keith, Cobb, Taylor, Sutton, Voegelein, Ballard, Bryant, Christenson, Lafond, Saxton.
 Third row—Pierce, Berry, Davis, Hamilton, Cobb, Gibson, McKinnis, Hautman, Haughton, Fowler, Shores, Ward.
 Fourth row—Brannon, McCracken, Adams, Harris, Miller, Schneider, Davis, Williams.
 Fifth row—Powell, Arnold, McLean, Ray, McKinney, Liggett.
 Sixth row—Galyen, Stevenson, Smith, Swisher, Ray.

Eighth Grade

Soon after school took up the eighth grade called a meeting and elected the following class officers: President, Lynn Hamilton; Vice President, Jean Beach; Secretary and Treasurer, Dick Hewett, and Joan Voegelein, class representative.

The eighth grade held a party in November in the gymnasium. In March a skating party was staged at Albany.



First row—Sherfy, Turner, Yeoman, Howe, Clavino, Mather, Shores, Lott, Ashby, Mannelin, Edes, Forrey,
 Hoelt, Groves, Humphreys.
 Second row—Shell, Miller, Graham, Beshoot, Calhoun, Laidlaw, Kambak, Gram, Simi, Pynch.
 Third row—Spires, Saxton, Fields, Rieke, Shaffer, Shimaneck.
 Fourth row—Whelan, Brown, Latimer, Loundserry, Keebler, Goldhammer, Looney, D. Brown.
 Fifth row—Smith, Chandler, Schmidt, Pollock, Hobbs, Logan.

Seventh Grade

Near the first of the year the seventh grade elected their officers. They were: Ramona Edwards, President; Douglas Coe, Vice-President; Dorothy Myers, Secretary; Corabelle Edes, Treasurer; and Carolyn Reiman as class representative. These officers held office all of the school year.



MUSIC





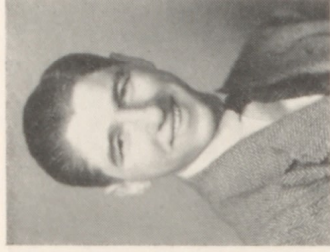
Bohle



Southwick



Jones



Trom

Lebanon Hi Band

The Lebanon High School Band, under the direction of C. C. Bates, has been one of the most active and outstanding organizations in the school.

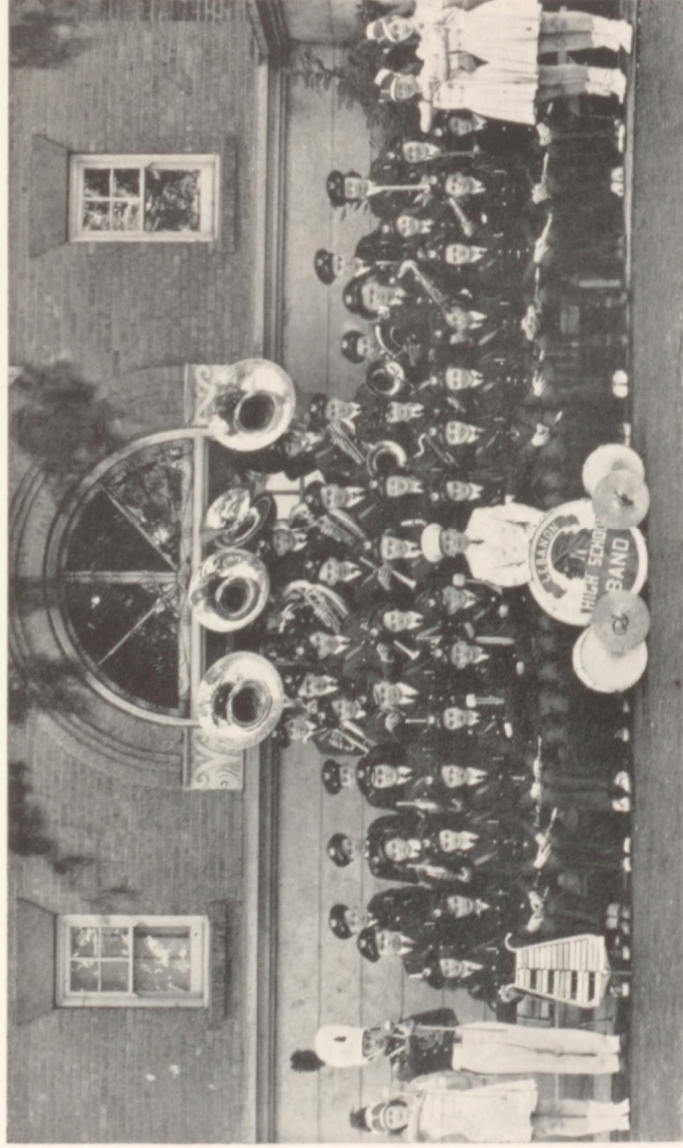
The band has made numerous public appearances throughout the school year, playing at all the athletic events to encourage the team itself as well as give pep to the spectators. The band gave three very fine concerts during the year. At one concert, the Albany band members were guests and appeared on the program.

The band has promoted a spirit of friendliness between schools and gave a very successful dance inviting the neighboring bands.

The band participated in the Annual State Music Contest at McMinville and received an "excellent" or II rating. The contest pieces were "Royal Scotch Highlanders," by King, "Morning, Noon and Night Overture," by von Suppe, and "Pax et Labor Overture," by Pares. Norman Leckband played a cornet solo at the contest and received a superior or I rating.

There are forty-eight members in the band this year, seventeen of whom are new. The seniors to graduate this year are: Charlotte Bohle, Bill Green, Helen Jones, Pat Forrey, Jim Southwick, Lynn Calahan, Bud Trom, and Rod Savage.

The new uniforms have added much to the appearance of the band, and this year four new uniforms were purchased by the Band Boosters Club. This parent club has been active under the leadership of Mrs. Ed Leckband. Norman Leckband in a new drum major uniform, Band Director C. C. Bates in



First row—Buford, Leckband, Voegelien, Larson, Reeves, Burleson, Schliske, Nettland, Hamilton, Bates, Cutts, Stone, Bohle, Calahan, Irvine, Ford, Richards, Whelan, Croner.
 Second row—Coakley, D. Brown, B. Brown, Southwick, Kirkpatrick, Jones, Forrey, Keebler, F. Cox, North, Riddle.
 Third row—Arnold, Pierce, McCracken, R. Cox, Savage, Durlam, Pearson, Green, Bristol, Fisch, Stringer.
 Fourth row—D. McKinnis, Bennington, Cobb, A. McKinnis.

Lebanon Hi Band

a new white wool uniform, and the drum majorettes in new shakos add to their spectacular showing as a marching band.

Officers for the past year were: President, Charlotte Bohle; Secretary, Jim Southwick; Assistant Director, Bud Trom; Point Secretary, Helen Jones.

Extra features of the band this year have been clarinet quartets, brass quartets, and french horn quartet.

Our band director, C. C. Bates, is a graduate of Oregon State College and has taken extensive music training at the University of Oregon and University of Washington. Before coming to Lebanon he had been band instructor at the Sandy High School for the last five years.

French Horn Quartet

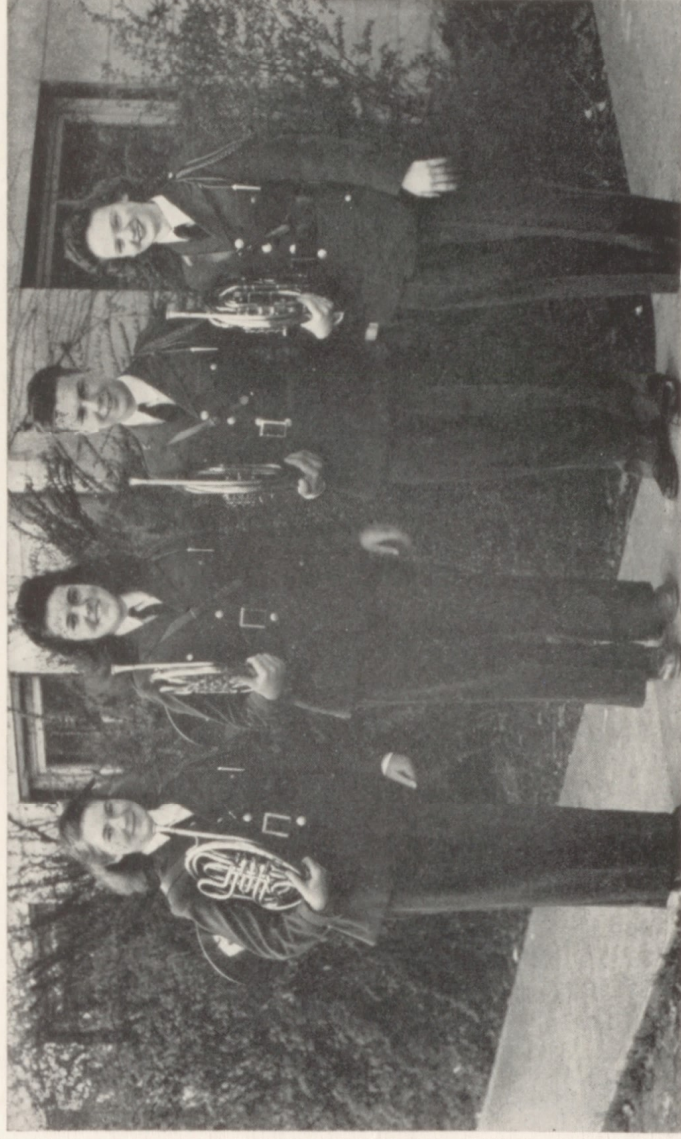
One of the most active divisions of the Lebanon High School band this year was the French Horn Quartet composed of Nancy Kirkpatrick, Jim Southwick, Betty Brown, and Dorothy Brown.

Nancy Kirkpatrick, first horn, has played in the band six years. She is a senior and after graduating she plans to continue her study of music. One of her most prominent activities is Girls League, of which she is president. She was May Queen this year.

Jim Southwick, second horn, has played in the band for three years. He is a senior also. Besides his band work, Jim is on the Hi-Light staff, Senior Class president, and editor of the Warrior.

Betty Brown, third horn, is a sophomore, playing her third year in the band. She formerly played a mellophone but changed to the french horn two years ago.

Dorothy Brown, fourth horn, is in the seventh grade, playing her first year in the band and quartet. She formerly played the mellophone but changed to the french horn this year.



D. Brown, B. Brown, Southwick, Kirkpatrick.



Bohle, Stone, Jones, Forrey.

Clarinet Quartet

The clarinet quartet is a new addition to the ensembles of the band this year. It is composed of two Bb clarinets, played by Charlotte Bohle and Gladys Stone, an alto clarinet played by Helen Jones, and a bass clarinet played by Pat Forrey.

Charlotte, who has been a member of the band for years, is a senior this year. She is the first clarinetist and will be missed very much next year.

Gladys, who is a rather new member of the band, having been here only two years, is a junior and will be first clarinetist next year.

Helen, who played a Bb clarinet for five years, started playing the alto clarinet at the beginning of this year. She is also a senior.

Pat also played a Bb clarinet until last summer when she started on the bass clarinet.

The quartet entered the State Contest at McMinnville this year and won II division.

Glee Club

The fourth period Glee Club composed of fifty voices has been very active in school assemblies. At Christmas time they went caroling, serenading shut-ins and cheering the sick.

The Glee Club, consisting of mostly beginners in vocal singing, learn fundamentals of sight reading, tone quality, and ear training as well as a deeper appreciation of music and a knowledge of musical terms. After a year or even sooner they are transferred to the A Cappella Choir where they really learn to use these fundamentals in singing.

A Girl's Senior Sextet has been formed from this group which includes Gwen Adams, Dorothy Gilbert, Patricia Forrey, and Ramona Warnke, Lorayne Sorseth, and Betty Croner.

Miss Alice Holmback, supervisor of vocal instruction of the high school, is director.



First row—Kau, Adamson, York, Craig, Grogan, Kaufman, Clarke, Hodges, Leevee, Crockett, Housen, Hurst, Kimble, Ames.
Second row—Stryker, Dent, Jennings, Pierce, McTimmonds, Sylvester, Clymer, Sylvester, Kirk, Whiteis, Smith, Raber, Collins.
Third row—Rose, Gilbert, Fillpot, Erickson, Sorseth, Bowen, Erickson, Nolan, Carter, Grisham, Nolan.
Fourth row—Wilkinson, Wallace, Ray, Michelson, Bartels, Chastain, Ensley.
Fifth row—Boggs, Hyder, Huber, Beach.



First row—Adamson, Walker, Owens, Neustel, Iverson, Jennings, Crockett, York, Whiteis.
 Second row—Schlieske, Irvine, Syvester, Sorseth, Ford, Whelan, Beale, Richards, Grisham.
 Third row—Kaufman, Warnke, Liggett, Kirk, Kirkpatrick, Sanders, Bohle, Clarke, Kimble.
 Fourth row—Speasl, Bryant, Bowen, Fields, Keebler, Farrell, Gilbert.

Girls Glee

The Girls Glee Club is composed of around fifty voices from both the Glee Club and A Cappella Choir which was organized this year under the direction of Miss Alice Holmback.

Regular practices were held each week outside of class which takes extra time for the students as well as the director, but wonderful results have come from this cooperative spirit that the girls have in making this club a most successful one.

They entered the District Music Contest held in McMinnville, April 24, and received first in rating.

Some of the songs which were presented in the concert and in the contest: "Blue Are Her Eyes," "The Lamb," and "The Night Has a Thousand Eyes."

A'Cappella Choir

Congratulations are in order for the A'Cappella Choir for their excellent work during this year as they have kept a grand record at the top in musical ratings for the last few years as well as this year.

Under the same director, Miss Alice Holmback, the chorus has done excellent. Although Miss Holmback conduct the Glee Club, Girls Glee Clubs, besides many smaller ensembles, she still has time for the chorus. Laverne Stewart is regular accompanist.

The Choir rated first at the District Music Contest held in McMinnville, April 24.

The chorus composed of fifty voices has presented several concerts in a joint Glee-Band Concert.



First row—Sorseth, Kirkpatrick, Stewart, Yagen, Cooper, Hardy, Bohle, Brown, Mitchell, Speasl.
Second row—Stowe, Spohn, Manuel, Eubank, Warnke, Beale, Farrell, Smith, Neustel, Bryant.
Third row—Hammett, Rudisil, Crabtree, Croner, Owens, Austin, Keebler, Walker.
Fourth row—Bartruif, Wilkinson, Wallace, Ray, Jennings, Daily, Ensley, O'Brien, Hainz.
Fifth row—Johnson, Cox, Moulton, Gilbert, Heyne.
Sixth row—Pearson, Calahan, Jennings.



Beale



Bohle



Keebler

Girls Trios

The Girls Trio I of Lebanon High School is composed of Marie Beale, sophomore, Charlotte Bohle and Janet Keebler, seniors. They won a "Superior" or I rating at the State Music Contest at McMinnville and are eligible to participate in the Regional Contest at Eugene. Charlotte and Janet have been members of this trio for four years. The trio has taken a very active part in representing the high school as well as the town itself on various programs and broadcasts.

Nancy Kirkpatrick, Pauline Sanders, and Laverne Stewart compose the Trio II. This is the second year the trio has sung together. Pauline and Nancy are seniors, while Laverne is a junior. They have appeared at school functions, church services, local entertainments, and over the radio. They enjoy singing and have given generously much of their time for this work. They also have been active in the Music Department of Lebanon High School.



Kirkpatrick



Sanders

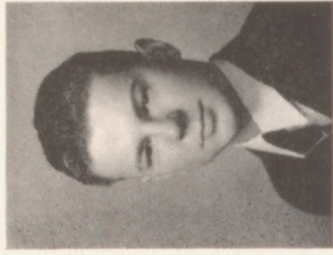


Stewart

ACTIVITIES







Southwick



Meritt



Sanders



Stone

Warrior Staff

- Jim Southwick Editor-in-Chief
 Reid Meritt Associate Editor
 Pauline Sanders Business Manager
 Gladys Stone Associate Business Manager

Like last year the 1942 Warrior staff was chosen by the student council. Mr. Hickcox, advisor, submitted a staff to the council to be approved.

With the assistance of several capable reporters, this staff has edited this 1942 Warrior for Lebanon High School.

A new system concerning the election of next year's staff was adopted this year. The associate editor and business manager of this year's staff will advance to editor-in-chief and business manager of the 1943 Warrior and their associates will be elected. This is similar to the plan followed by the Lebanon Hi-Light.

Hi-Y

The Hi-Y is one of the new organizations in the high school, being organized last year. It is affiliated with the Northwest Hi-Y Council and the Y. M. C. A.

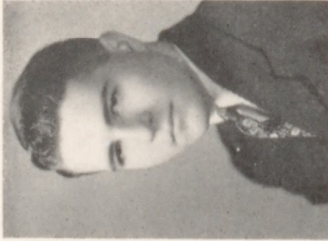
It is a very active club in the school, sponsoring two school dances, and helping the new students get acquainted around the school. They also had an intramural basketball team which participated with the other teams during the noon hour.

The Hi-Y is consisted of seven-teen members each of whom has to fill out an application and be voted into the club by a majority vote of those already in the club.

The officers this year were as follows: President, Ted Daily,



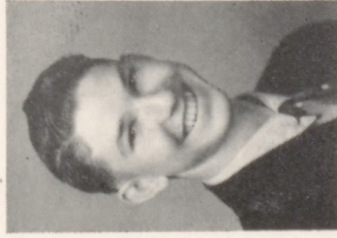
Daily



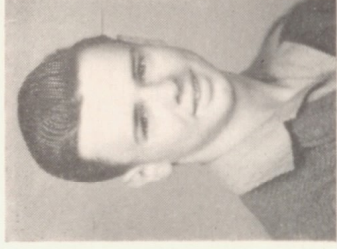
Jennings



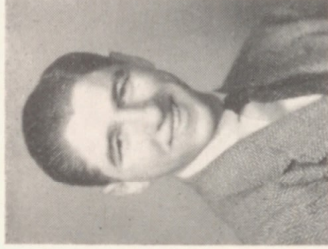
Daily



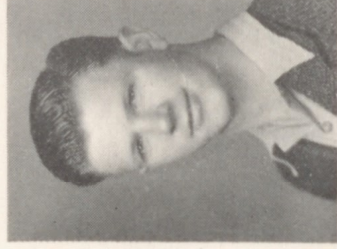
Plagmann



Daily



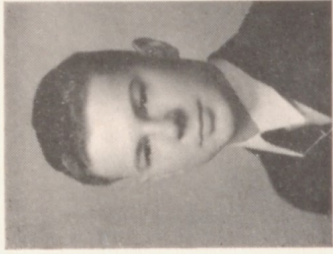
Jennings



Daily



Plagmann



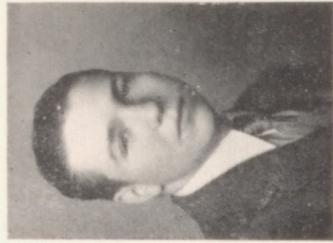
Southwick



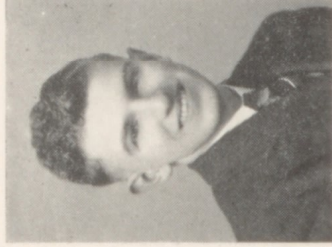
Wheeler

Hi-Y

Vice-President, Reid Meritt, Secretary, Jim Southwick, Treasurer, Scott Wheeler, Sergeant-at-Arms, Bud Trom, Chaplain, Phil Ashton, and Advisor, Mr. Page.

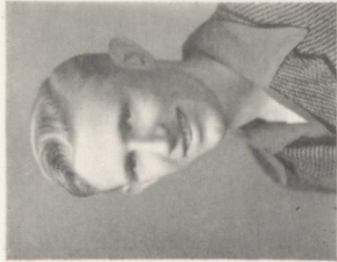


Smith

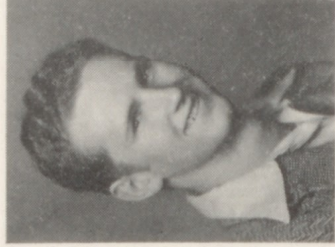


Olds

These are the officers who held office at the end of the school year. Bob Shores was formerly president, but he left in March to attend Oregon State College, and Ted Daily took his place as president. He was formerly vice-president and a new vice-president, Reid Meritt, was elected.

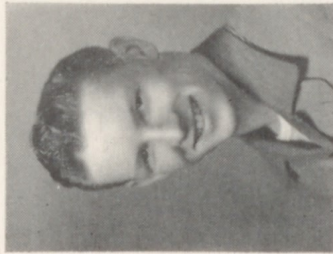


Cook



A. Jennings

The officers for next year will be Ted Daily, President, Jack Beach, Vice-President, Reid Meritt, Secretary, Calvin Jennings, Sergeant-at-Arms, Dale Boggs, Chaplain.



Beach



Koepke



Kirkpatrick



Sanders



Bohle

Mayfair

Ruling the Mayfair this year was Queen Nancy I and the six princesses of the Royal Court.

Besides the assembly for the eighth graders, a magician also was present during the morning activities.

Contrary to last year the Coronation Ceremonies were held at one o'clock, with a baseball game immediately following.

At 8:45 P. M. the annual Junior-Senior Prom, sponsored by the Juniors, was staged in the high school gymnasium to top off another successful Mayfair which was enjoyed by everyone.



Stock



Shery



Keebler



Bohlken

Girls League Council



Wheststone



Ayers

One of the objects of the Girls League this year has been to promote friendliness. This spring they featured the Big Sister plan, through which each member became Big Sisters by selecting an incoming freshman girl as her Little Sister.



Stewart



Irvine

One of the finest ways of promoting friendliness was reached through the noon dances under the sponsorship of the Girls League held in the gym. "Hello Day" was featured at the first of the school year.



Dewey



Kruml

Social events of the year included the annual "Kid Party" given for the freshman girls. The "Father and Daughter Night" was a new feature this year. Everyone had fun and many dads expressed a desire to make it an annual event. The mothers were honored at a tea on May 1.



Southwick



Kirkpatrick



Voegelein



First row—Kamph, Powell, Smith, Hindman, Adams, Irvine, Ayers, Bohlken, Stryker, Stowe, Stone, Irvine, Warnke.
 Second row—Burford, Christ, McPherson, Hollingsworth, Stewart, Dahlgren, Kirkpatrick, Forrey, Bohle, Bryant, Sanders, McClain, Giblin.
 Third row—Hartle, Lee, Gentry, Eubank, Croner, Dwyer, Dewey, Sorseth, Gilbert, Stowe, Reeves.
 Fourth row—Crabtree, Bowen, Smyth, Whelan, Reeves, Patterson, Liggett, Ford.
 Fifth row—McElhiney, Christ, Fields, Saxton, Miller, Dillard, Sorseth.
 Sixth row—Hensen, King, Krumi, Neustel, Southwick.
 Seventh row—Cox, Meritt, Cook, Plagmann.

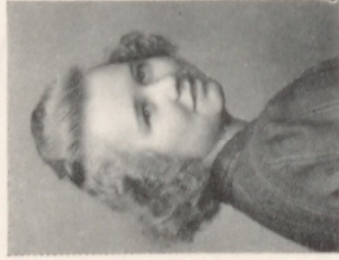
Pep Club

This year for the first time boys have been entitled to membership in this club.

The officers are: Bette Miller, President; Jean Post, Vice President; and Blythe Lenox, Secretary-Treasurer. It is under the supervision of Mrs. Barbara Smith.



Miller



Post



Lenox



Manela



Reeves



McPherson

Ski Club

The Lebanon Ski Club is an interesting club which has had quite a few overnight trips to Hoodoo Bowl during the winter and also just Sunday afternoon trips that provide many a thrill for the members.

The officers include: President, Bill Manela, Vice-President, Bill Reeves, and Secretary, Arlene McPherson.



Front row—Stewart, Irvine, Sanders, Whetstone, Kirkpatrick.
Second row—Ashton, Reeves, Whelan.
Back row—Leckband, Irvine, Harden.



First row—Bremer, Cawrise, Cook, Burge, Barnits, Hewett, P. Schrock.
 Second row—E. Schrock, Hainz, J. Sturtevant, L. Housen, Meritt, Cox.
 Third row—Bartruif, Bryant, Koepke, Miller, A. Housen, Darling.
 Fourth row—D. Sturtevant, Rogers, Roe, Southwick.

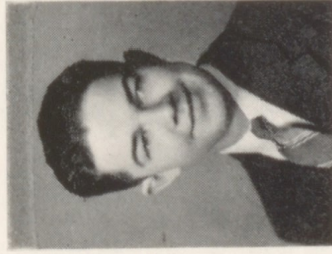
Fire Squad

The Fire Squad members are the firemen of the school. It is their duty to combat small fires and to conduct fire drills within the school.

The fastest time for evacuating the building for the year was one minute and ten seconds. This was about twelve seconds short of last year's record time of fifty-eight seconds.



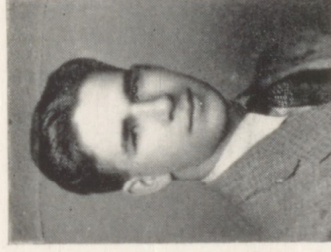
Wheeler



Nichols



Heyne



Erskine



Stock



Speasl



Stowe



Keebler

S. O. S.

The S.O.S. Club, or School Office Service, is organized to help the office girls learn office routine.

The officers for this year were: Frances Morris, President; Elizabeth Speasl, Vice-President; Helen Stowe, Secretary; and Janet Keebler, Treasurer. Mr. Bryan is the girls adviser.



First row—Sanders, Jones, Ayers, Kirkpatrick.
Second row—Liggett, Bohlken, Dewey, Whetstone.
Third row—Walker, Pettijohn, Anderson, Collins.



First row—Walker, McPherson, Dewey, Brown, Reeves, Raines, Reeves.
 Second row—Ashton, Liggett, McClain, McElhiney, Dwyer, Ayers, Stone.
 Third row—Wheeler, Klient, Southwick, Dempsey, Anderlik, King.
 Fourth row—Koepeke, Erskine, Cuttis.

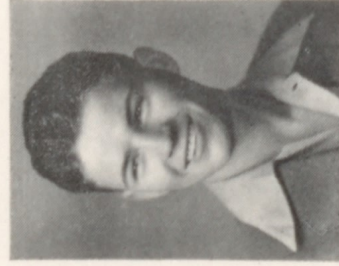
Lebanon Hi-Light

Supported by a well organized and dependable staff, the Hi-Light, headed by editor-in-chief, Reid Meritt, and assisted by Donald Cox, associated editor, Catherine Crabtree, business manager, Ardys Wheistone, assistant business manager, Juanita Brown, proofreader, and Norma Walker, exchange editor, issued its first edition of the 1941-42 year on September 30.

The second semester started with Donald Cox succeeding Reid Meritt as editor, while Stanley Cuttis became assistant editor.



Meritt



Cox



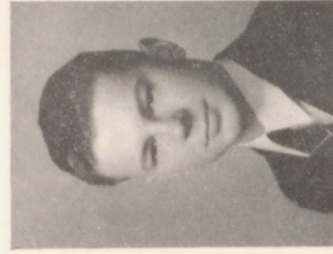
Crabtree



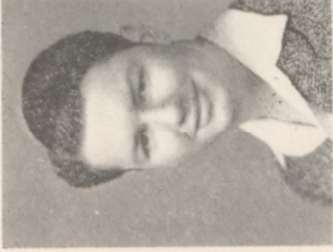
Wheistone



Bohlken



Southwick



Johnson



Ayers

Library Club

The members of the Library Club, headed by Marceil Bohlken, are a very active group.

They held several parties during the year, each of which was a bigger success than the previous one.

Also, a skating party was held in Albany for the Library Club members and their guests. There were nearly 80 present.



First row—Adams, Nichols, Christ, Larson, Brown, Stowe, Stryker, Raines.
Second row—C. Smyth, Southwick, Reeves, Warnke, Patterson, Duncckley.
Third row—Whelan, Christ, Reeves, Jones, Sorseth, Bilyeu, Wilson.
Fourth row—Miller, Leever, Kruml, Brown, Carlson, Baxter.
Fifth row—Meritt, Hainz, Clarke, Bennington, Cawrse.
Sixth row—Cox, Dunlam, Savage, Wheeler.



First row—Hindman, Benton, Adams, Smith, Fiala, Stowe, Stryker, Ames, Nichols, Schliske.
 Second row—Yagen, Eubank, Croner, Burford, Hollingsworth, Dewey, Bohiken, Ayers, Carlson.
 Third row—Alley, Neustel, Benton, Davis, Pierce, Sylvester, Cuttis, Richards, Stowe.
 Fourth row—Powell, Jennings, Daily, Jennings, Bowen, Hammett, Rudisil, Ford.
 Fifth row—Cawrse, Crossan, Wilkinson, Harden, Johnson, Cox.
 Sixth row—Dickey, Dempsey, Boggs.

Drama Club

The Drama Club has had one of its most successful years this school season, under the able direction of Miss Buchanan, club advisor.

The annual Christmas play had a large cast enabling all the club members to participate.

The officers were: Gladys Stone, President; Lois Gilbert, Vice President; Beverly Keebler, Secretary; Scott Wheeler, Treasurer.



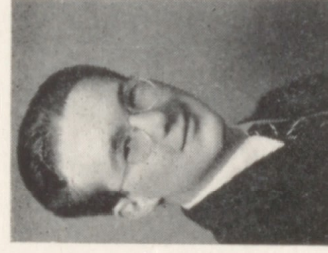
Stone



Gilbert



Keebler



Wheeler



Gentry



Long



Warnke



Keyser

Latin Club

The Latin Club has a well organized program for the club activities. Each year there are two main events which are sponsored by this club.

The Christmas party proved to be very successful. It was attended by about 30 members and guests.

The Latin Club picnic usually affords a great deal of enjoyment for every one who attends. As in previous years, this fact held true.



First row—Lenox, Christ, Dillard, Dunckley.
Second row—Christ, Marquardt, Pape, Hartle.
Third row—Liggett, Crabtree.



First row—Larson, Benton, Studebaker, Cray, Stowe, Ames, Farrell, Crabtree, Rose.
 Second row—Devlin, Forrey, Long, Montgomery, Whelan, Stryker, Bohlen, Ayers, Spears.
 Third row—Schliske, Benton, McTimmonds, Kirk, Rose, Crockett, Cutts, Hurst.
 Fourth row—Post, Dillard, Irvine, Dewey, Crabtree, Hollingsworth, Miller, Pierce, Richards.

Home Economics

The Home Economics Club has had another successful year. They were under the leadership of Miss Francis Williams, home economics teacher.

They had a formal initiation in February and attended the district convention in Albany. A Mother's Day Tea was held and to add variety the club climaxed the year with a hay ride.

The officers were: Ailene Miller, President; Blythe Lenox, Vice President; Dorothy Miles, Secretary; Ramona Warnke, Treasurer.



Miller



Lenox



Miles



Warnke



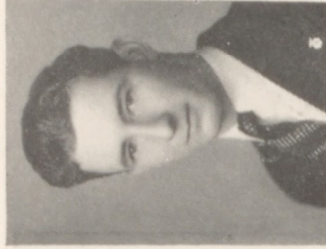
Nichols



Wheeler



Housen



Steckley

F. F. A.

The F. F. A. is one of the most active organizations in the high school. Each year they sponsor a Barn Dance, an intramural basketball team, and a softball team.

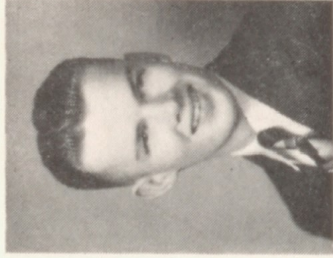
The officers for the coming year are: President, Norman; Vice-President, Cate; Secretary, Wiberg; Treasurer, Robertson; Reporter, Crossan.



First row—G. Wiberg, E. Haven, Rieke, R. Wiberg, Cawrse, P. Schrock, McKinney, Powell.
Second row—A. Housen, Hester, W. Haven, J. Sturtevant, Miles, Roe, A. Jennings.
Third row—Bartruff, D. Sturtevant, Miller, C. Heyne, Hainz, Robertson.
Fourth row—A. Furchau, Erskine, Bryant, Ufford.
Fifth row—Darling, Adamson, Koepke.



Sanders



Irvine

Yell Leaders

Along with every school's activities in sports comes the important job of keeping things rolling. For the past four years this is what Pauline Sanders and Jim Irvine have been doing. It was their task to prepare assemblies, conduct rallies, and lead the cheers for victory at the games.

Each year out of the yell leaders one is chosen as rally chairman. This year Pauline Sanders was chosen.

Both students have been very active in school activities. This year Pauline received the D. A. R. award, was treasurer of her class, business manager of the annual, and a member of the girl's trio. Jim has been very active in the musical field of the school, in which he was president.

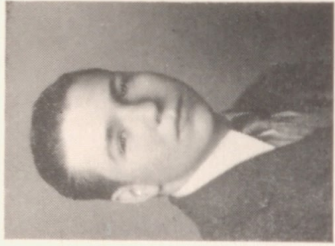
Next year Lebanon High will miss Pauline and Jim for they have done a fine job as yell leaders.

Yell leaders are an indispensable item of school, as they keep up the student morale during the games. Without yell leaders to keep the team pepped up the boys would soon lose interest in the game and sports would be demolished.

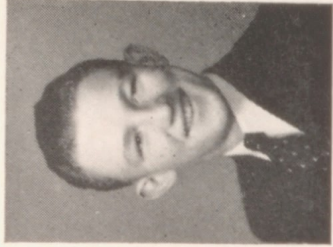
ATHLETICS



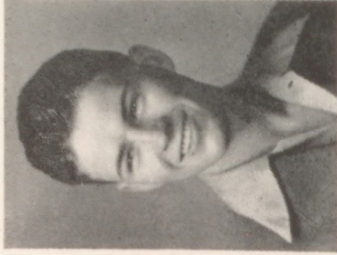




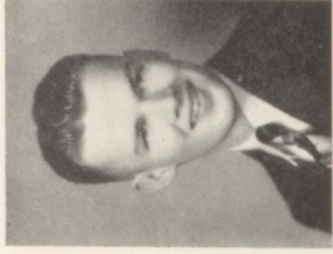
Smith



Mangold



Cox



Irvine

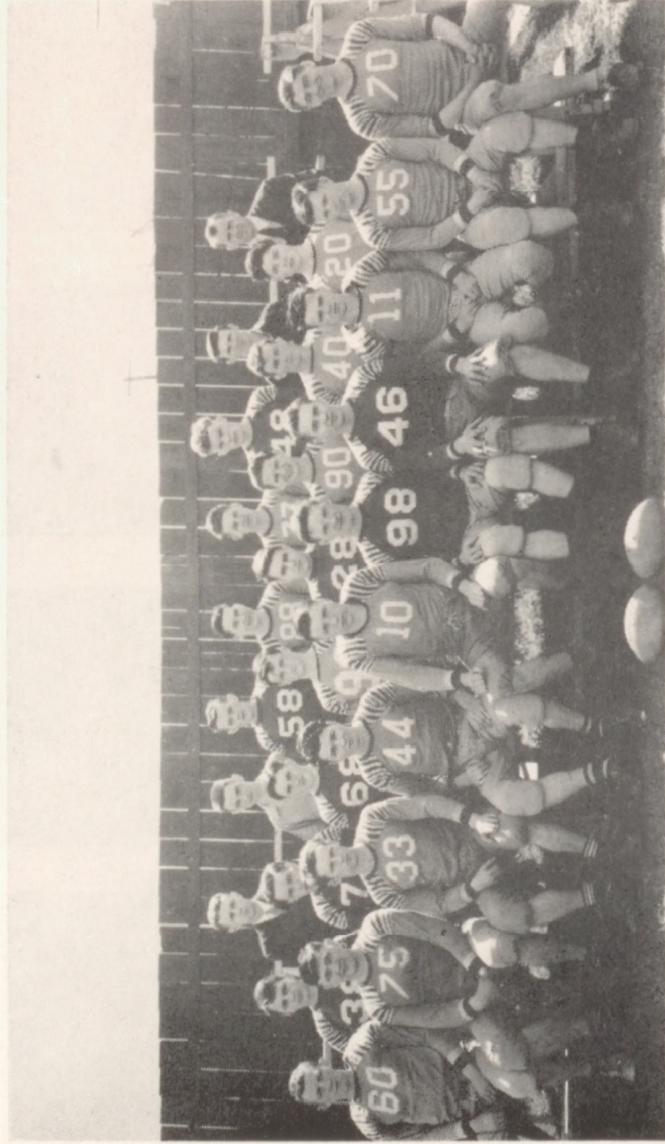
Lettermen's Club

The L. H. S. Lettermen's Club has in previous years been one of the most powerful organizations of our school. This club is composed of athletes who have competed in one of the four different sports given by L. H. S., and having received their reward of a letter makes them a member of this club.

Due to the late start of functioning this year they did not become as active as they might have. Officers elected were: President, Clinton Smith; Vice-president, Joe Mangold; Secretary, Don Cox; Treasurer, Jim Irvine.



First row—Trom, Daily, C. Jennings, O'Brien, Ensley, Christ, Rucker.
Second row—Johnson, Postle, Cutts, Manella, Beach, Reeves, Barnis.
Third row—Thoma, A. Jennings, Cook, King, Plagmann, Pearson, Ashton, Bahrke.
Fourth row—Koepe, Smith, Irvine, Mangold.



First row—Mangold, Thoma, A. Jennings, Johnson, Smith, Beach, Pearson, Daily, C. Jennings, Trom.
Second row—Harden, Manela, Gardner, R. Cutts, Ashton, Green, Steckley, Ray.
Third row—Page, Cooper, S. Cutts, Dickey, Shephard, Cox, Ensley, Helser.

Football

The Warriors team this year was very light and green. The players included five seniors, one of whom had not played before. With the material present Coach Roy Helser did his best to form a good team. The Warriors played a different style of football than they had ever played before, the single wing formation, new to all Warriors, but they liked it very much. This play makes the game faster and much more interesting to the spectators. The Warriors played a total of nine games, winning two and tying one. One of the most exciting games on the home field was that in which the Warriors trampled the Sweet Home Loggers to a 33-6 victory.

C. SMITH—Clinton played his last year of football for Lebanon High this year. He is a senior, having played first string for three years. This year he was co-captain at center position. He was very good at backing up the line.

G. WARNE—Also a senior and the other co-captain. He is one of the toughest guards Lebanon has had in years.

B. TROM—Bud is a two year letter man, and a senior. He was our left end and exceptionally good at breaking up plays and taking down interference.

D. FENNEL—Was the only junior tackle this year. He was one of the strongest iron men of the line.

J. BEACH—Is a sophomore, the only sophomore on the first string, was good at making tackles behind the line; played at left guard.

B. THOMA—A senior and the largest man on the team weighing 205 lbs., was an exceptionally good offensive player, and held down the right tackle position very nicely.

J. MANGOLD—Joe is a good pass receiver, a senior, and likes to play.

C. JENNINGS—Held down the quarterback position very good for his first year; he is a junior.

T. DAILY—Ted is the only regular first string man, from a year ago, in the backfield. He was a very outstanding passer and played at right half.

D. JOHNSON JR.—Also a junior in school played left half and made a good combination for Daily's passing. He was also a good broken field runner.

Letter winners for the 1941 season were all the first string plus S. Cutts, C. Pearson, and P. Ashton.

Cottage Grove	19	Lebanon.....	0
Roseburg	13	Lebanon.....	6
Sweet Home	6	Lebanon.....	33
Albany	26	Lebanon.....	6
University High	19	Lebanon.....	7
McMinnville	19	Lebanon.....	7
Springfield	0	Lebanon.....	0
Reedsport	0	Lebanon.....	6
Corvallis	26	Lebanon.....	0





First row—Beach, Wilson, Irvine, Trom, Manela, Cook, King, Mangold.
 Second row—Cooper, Long, Olds, Shepherd, Olds, Ensley, Coe, Wallace.
 Third row—Page, Rucker, Helser.

Basketball

Although this year's basketball season was not successful in the number of games won and lost, it was successful in that it gave some of the up-and-coming players a chance to show their talent and at the same time gave them some experience. The experience the boys received this year will mean very much next year when they will show L. H. S. as a champion team. Only two lettermen returning and a new coach hindered the team also.

Letter winners:

Mangold	Forward
Trom	Forward
Cook	Forward
Fennell	Center
King	Center
Manela	Guard
Irvine	Guard
Penfold	Manager
Rucker	Manager

One of the many hi-lights of the season was the time that Corvallis edged out the Berrypickers by three points in a thrilling game on the home floor that

ended 31 to 28 in favor of the opposers. The game was tied at the end of the first, second and third quarters. Incidentally Corvallis placed second in the state tournament this year. Also, the local team downed their friendly rivals, Sweet Home, in both games.

Lebanon.....	11	Rubinstien Jr.	22
Lebanon.....	24	Springfield	20
Lebanon.....	28	McMinnville	50
Lebanon.....	28	Toledo	32
Lebanon.....	24	Sweet Home	22
Lebanon.....	15	University High	49
Lebanon.....	18	McMinnville	44
Lebanon.....	32	Junction City	27
Lebanon.....	28	Corvallis	31
Lebanon.....	14	Springfield	34
Lebanon.....	8	Albany	33
Lebanon.....	12	Frosh	41
Lebanon.....	21	University High	15
Lebanon.....	12	Corvallis	32
Lebanon.....	14	Toledo	29
Lebanon.....	14	Albany	40
Lebanon.....	34	Sweet Home	29





First row—A. Jennings, Long, Smith, Reeves, Mangold, Thoma, Christ, Daily, C. Jennings.
 Second row—Cook, White, Erickson, Ellis, Heyne, Manela, De Kuyper, Haven.
 Third row—Rountree, Ryder, Ayers, Meritt, Coe, O'Brien, Helser.

Baseball

The 1942 baseball season of Lebanon High School has been somewhat less successful than the flychasers of last season. They opened the season with flying colors when they downed the Sweet Home Huskies 6-3 in a game which was called in the sixth inning due to bad weather conditions. The field was very wet due to rain and hail. The second game of the season, a last minute thriller with Albany, was lost 16-11. The third game resulted in a 15-13 victory over Corvallis. This win was followed by a number of defeats.

The varsity nine was hurt seriously by the graduation of numerous veterans. The weather was very unsettled, thus it was almost impossible to hold regular practice.

Games played thus far:

Lebanon.....	6	Sweet Home	3	Lebanon.....	2	Sweet Home	8
Lebanon.....	11	Albany	16	Lebanon.....	0	Albany	4
Lebanon.....	15	Corvallis.....	13	Lebanon.....	8	Sweet Home	9
Lebanon.....	6	Corvallis	14	Lebanon.....	8	O.S.C. Rooks	10

FEATURES





Tough??



Smiles



Hold it



Princess



Peck-A-Boo



Sadie



SENIORS '42



Brick



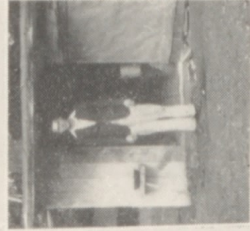
Mac



Farmer



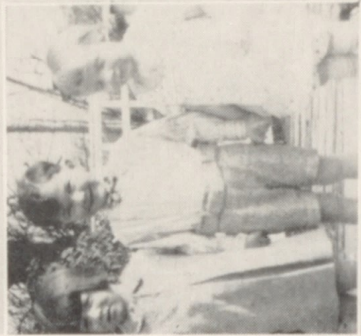
Cutie



Our Editor



Cock of the Walk



Mothers' Little Darlings



Willie



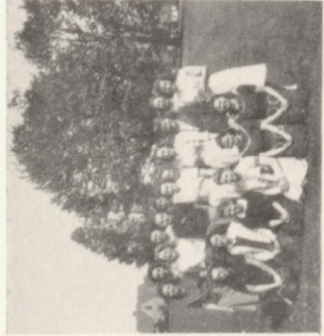
Rooks



Damp??



Swing!



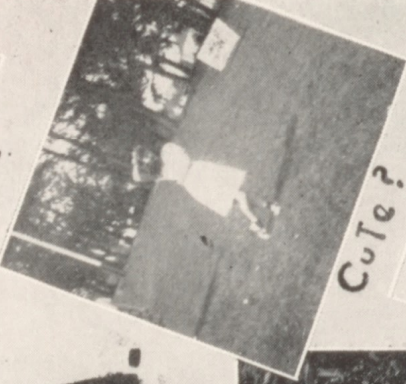
Athletes



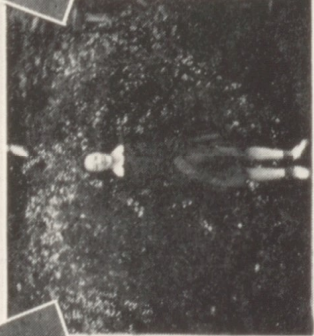
Strike!



Huddle



Cute?



Prexy



Really?



Your Out!



Teammates

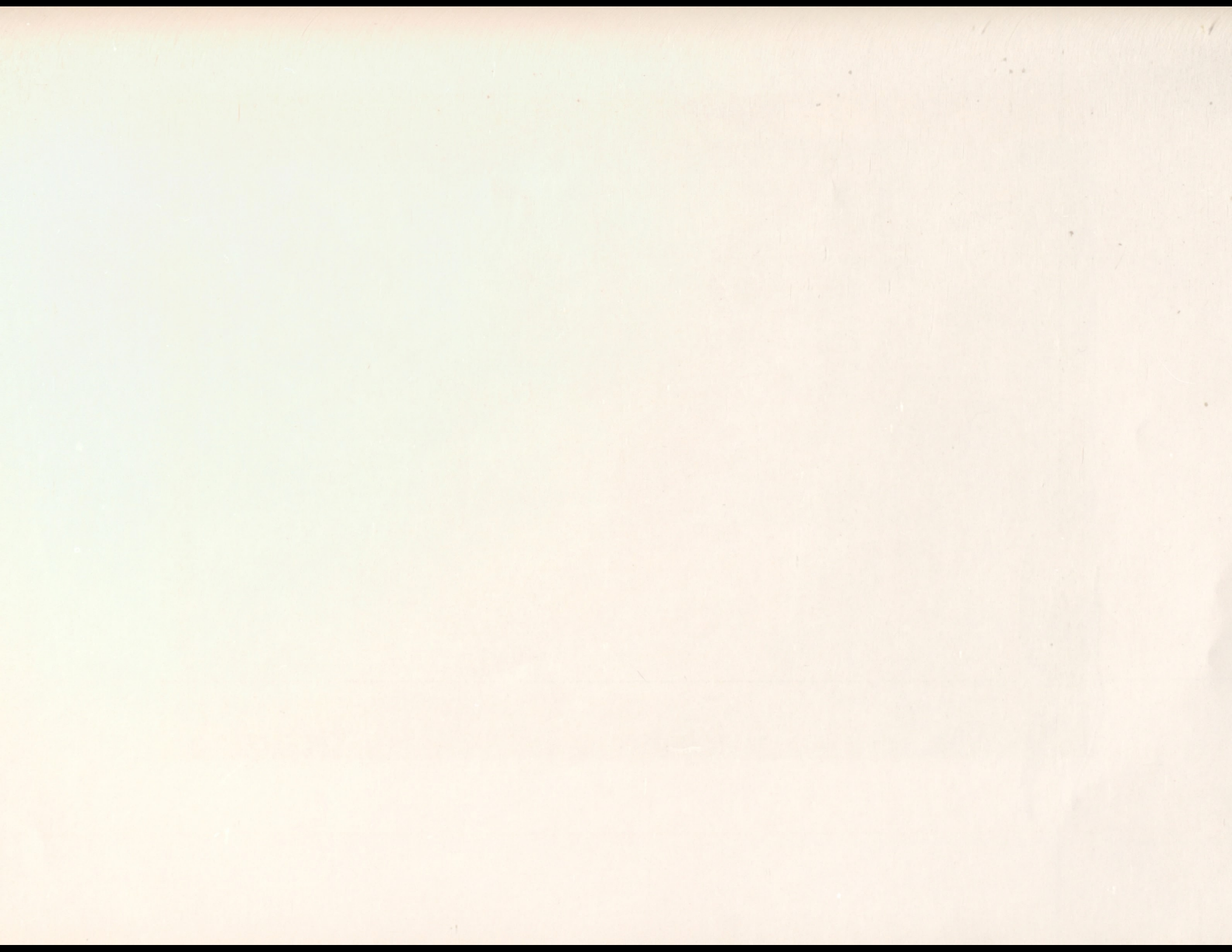


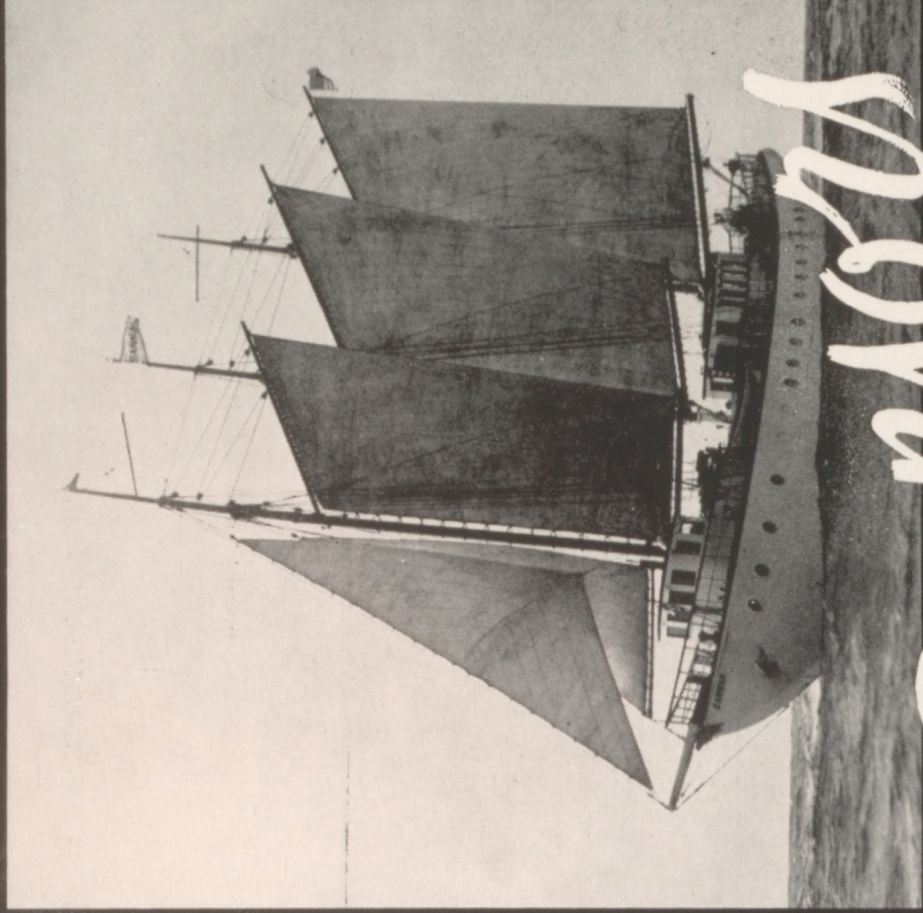
G.A.A.



S P O N S O R S







Spoonwood

Wiltshires

ENGRAVING COMPANY





The government demands pasteurized milk.
It's the best milk for you.

BOHLE'S CREAMERY

STYLISH — DURABLE

School togs for young men and women.

BRITTON'S FEDERATED STORE

Lebanon

COMPLIMENTS

of

BURLESON'S SANDWICH SHOP

CARLSON'S UNION SERVICE

UNION OIL PRODUCTS

Wholesale

Retail

CLARK'S

NEW AND USED FURNITURE

We Do Upholstering.

824 Main Street

Lebanon

**COLUMBIA FOOD MARKET
LONG & RILING MARKET**

Lebanon

Phone 351

DAVIS BARBER SHOP

THEATER BUILDING

DEN HERDER'S PLUMBING AND HEATING

Better Installations -- Dependable Service





<p>754 Main</p> <p>ELLIS' MEAT MARKET</p> <p>Phone 391</p> <p>G. S. Ellis — W. W. Ellis</p>
<p>693 Main</p> <p>J. E. ESTEP</p> <p>REAL ESTATE AND INSURANCE</p> <p>∞</p> <p>Phone 3251</p> <p>"A square deal or no deal"</p>
<p>Phone 821</p> <p>FITZGERALD TRANSFER</p> <p>Sand, Gravel, and Crushed Rock</p> <p>Sherman Street</p>

FIRST
with the
BEST

has been the policy of Howell's Studio in Corvallis for the last twenty-one years. A highly trained technical staff, modern equipment, courteous service, at reasonable prices.

MAKE IT YOUR STUDIO



HOWELL'S STUDIO

Corvallis, Oregon

"Quality you know is right"





GILMORE COURTESY CORNER

Bill Millhollen, Jr., Prop.

Main at Vine

Phone 681

Compliments

GILSON'S HARDWARE COMPANY

Over thirty years in Lebanon.

HARRISON'S GENERAL PETROLEUM

Main and Maple

Phone 1651

HOFFMAN & SON

Hoffman and Zemlicka, Prop.

BLACKSMITHING AND WELDING

1043 S. Main

Lebanon, Oregon

IRISH-HAMMETT'S SUPER MARKET

LEBANON'S SHOPPING CENTER

You'll like our way

Low prices every day.

653 Main

Phone 21

HOTEL LEBANON

IVERSON'S

Try our fresh frozen ice cream and frosted malt.

FOUNTAIN SPECIALS AND LUNCHEES

JOHANSEN DRUG STORE

The Rexall Store

Lebanon

Oregon





ED KELLENBERGER

Electrical Store
846 Main Street

Building Material
57 West Grant Street

Mill Supplies

Phone 1771

Gas — Lubrication

Storage — Washing



E. C. HALL GARAGE



Courteous Complete Service
Corner of Main and Ash Streets

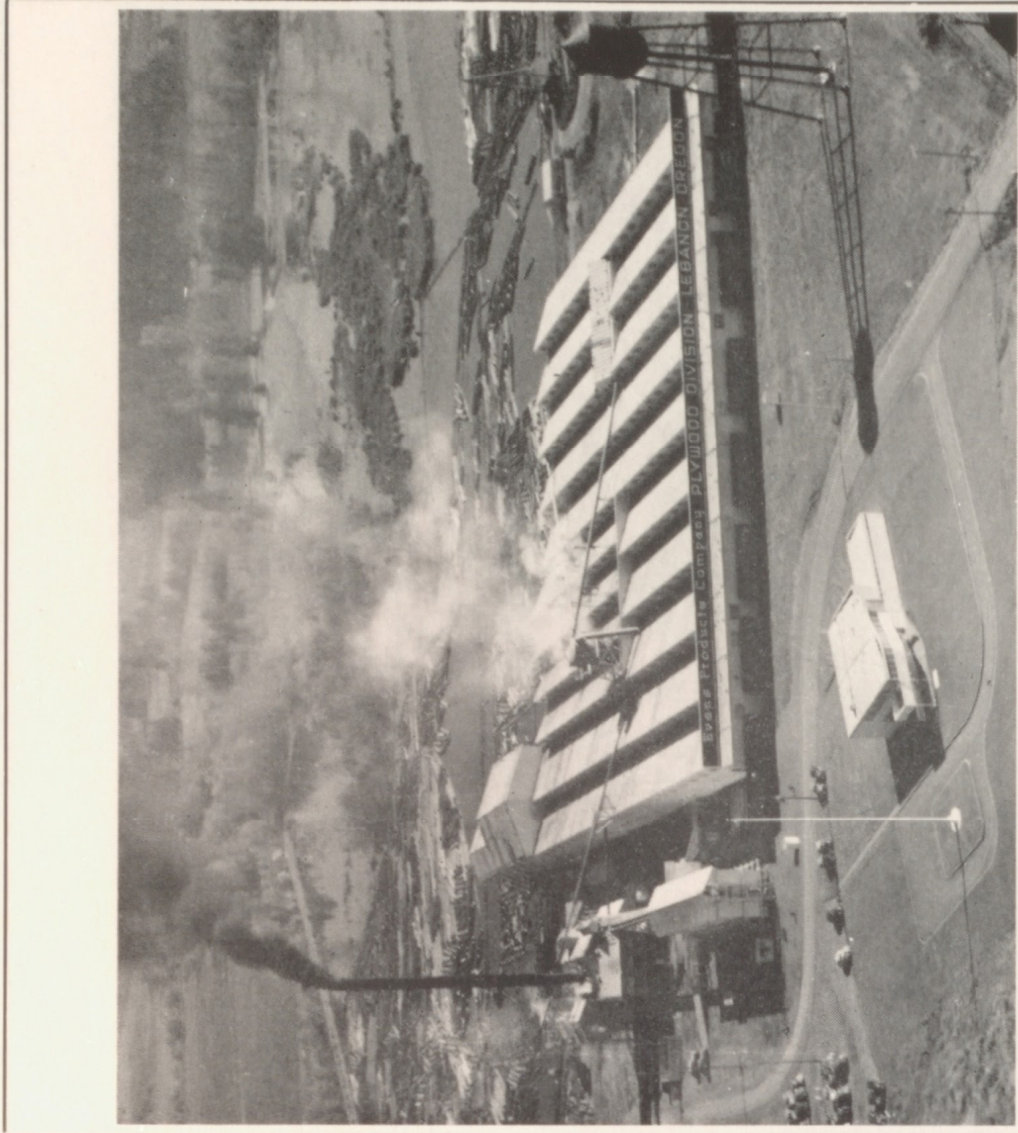
Phone 3091

Excellent Repair Shop — Good Eats at Your Side

KERR-MILLER DRUG CO.

Lebanon, Oregon

- School Supplies —
- Toiletries — Gifts
- Prescriptions —



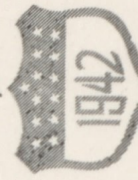
PLYWOOD DIVISION

EVANS PRODUCTS COMPANY

LEBANON, OREGON

52

Manufacturers of Douglas Fir Plywood





**TOM KIRK
AUTO SERVICE**

"Everything For Your Car"

ASSOCIATED OIL PRODUCTS—H. F. BAIRD, DISTRIBUTOR

THE FIRST NATIONAL BANK

BURTON'S MODERN DRY CLEANERS

CARLSON'S ELECTRIC

CORNET 5 - 10 & 25c STORE

DEL'S RED & WHITE

DEPOT AUTO & MACHINE SHOP

EICHNER FEED STORE

ALWAYS A GOOD SHOW AT THE

Kuhn and Gem Theaters

For 32 Years Lebanon's Center of Entertainment.

Greetings

LEBANON AUTO PARTS

EAT N' BOWL

at

LEBANON BOWLING ALLEYS

LEBANON FOOD MARKET

E. E. Hamilton, Prop.

Elsinore and I. G. A. Foods

Phone 651

Free Delivery

LEBANON STEAM LAUNDRY

Pickup and Delivery Service

A HOME INDUSTRY

Phone 2091





LEBANON TRUCK SERVICE

Local and Long Distance Hauling
Insured Carrier
Mill Wood — All Kinds
Phone 3111

FRANK & HERB BARBER SHOP

HEWETT'S DRUG STORE

HIRAM GROVES HARDWARE

HI-WAY GREEN HOUSE

R. E. HOY, AUTHORIZED SHELL DEALER

LEBANON BILLIARDS

LEBANON EXPRESS

LEBANON FEED & SEED

LEBANON LEADING FLORIST

Flowers For All Occasions

CORSAGES
Greenhouse on Oak
Phone 221

FLOWERS FOR THE SICK
Florist Shop on Second
Free Delivery

Linn County Lumber Yard

3rd and West Grant

Phone 3031

Kirkpatrick Motor Company



Sales

Service

Phone 751

Lebanon, Oregon

THE MARKET BASKET

Groceries — Fruits — Vegetables

Phone 711

Free Delivery





Early Summer Is Just the Time to
Check Up On Your Beauty.

MAYE'S BEAUTY SHOP

Phone 282

Central Lane

LEBANON LUNCH

LOU LOND HAT BOX

MAPLE AUTO COURTS

MICHELSON'S MEAT MARKET

MODERN MANUFACTURING COMPANY

MORAN'S AUTO SUPPLY

MUNYAN'S BAKERY

F. W. MUSGRAVE — BARBER

S. C. MYERS — REAL ESTATE & INSURANCE

NICKOLS FEED & SEED

Hodgen Brewster Feed

Sherman Street

Phone 2762

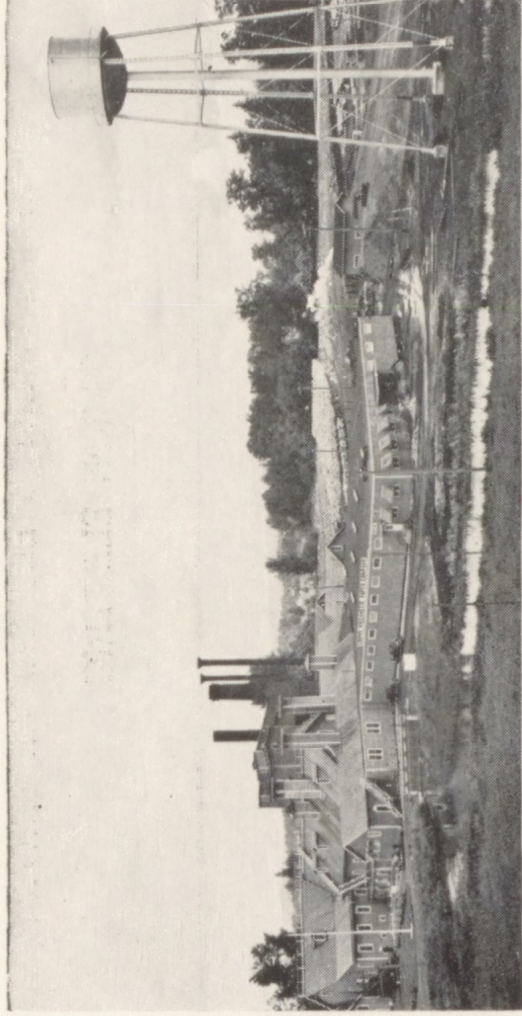
Compliments of

**CROWN WILLAMETTE
PAPER CO.**

Division of

Crown Zellerbach Corporation

8





NU-WAY CLEANERS

We Call For and Deliver

581 Main Street

Phone 611

OSBORN'S DRIVE IN MARKET

OWENS DAIRY

H. I. RAMSEY — REAL ESTATE & INSURANCE

REESE MUSIC & APPLIANCE STORE

REEVES GARAGE

VERN REEVES — INSURANCE

ROBERTSON'S GROCERY

SHAFER'S BATTERY & ELECTRICAL SERVICE

SISSION ELECTRIC

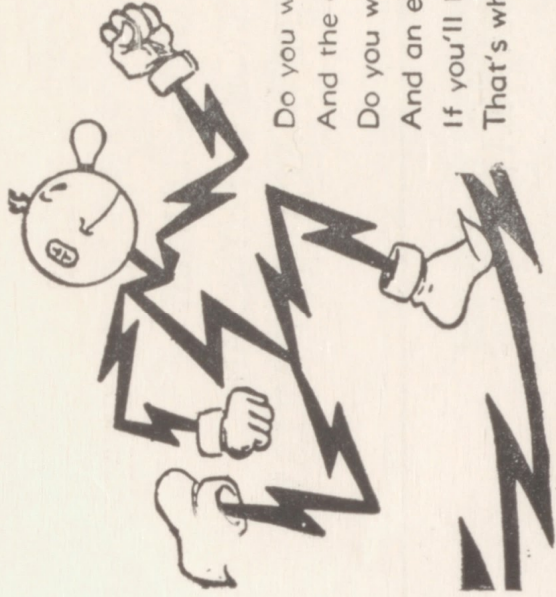
THE PASTIME

We Appreciate Your Patronage.

Divine & Muetze

JOE and JERRY'S MARKET

LEBANON'S MOST MODERN FOOD CENTER



Do you want your tasks made lighter
And the day and night made brighter?
Do you want delicious dishes
And an elf who'll grant your wishes?
If you'll let him work for you
That's what Reddy Kilowatt will do.

REDDY KILOWATT

Your Electrical Servant

MOUNTAIN STATES POWER COMPANY



FRANK PEARCE AGENCY

57 Main Street

ALL TYPES OF INSURANCE

Telephone 2781

SWANSON LOGGING COMPANY
VALLEY FEED & SEED STORE
WALLACE TRUAX OIL COMPANY
WAYSIDE AUTO SHOP

Professional Directory

DRS. BOOTH & MILLER

DR. GEORGE KELLOGG CRAIN — OPTOMETRIST

DR. J. G. GILL — DENTIST

DR. R. E. HERRON — PHYSICIAN

KENNETH G. WILSHIRE — ATTORNEY AT LAW

CONGRATULATIONS

from

J. C. PENNEY COMPANY

PINE LODGE CAFE

One-fourth mile south of Lebanon

South Santiam Highway

READ THE

ALBANY DEMOCRAT-HERALD

Linn County's Home
Daily Newspaper.

Complete news from Lebanon and Linn County daily.

L. H. S. Students are invited to visit our plant and see the news of the world come in.

These two services are operated for the best interests of the people of Linn County.

LISTEN TO

K-W-I-L

Linn County's Home
Radio Station.

Member Mutual-Donlee
Broadcasting Co.

You are cordially welcome to visit our Lebanon studio and the transmitter in Albany.

REEVES CLOTHING COMPANY

Men's and Young Men's Clothing.

The Store of Nationally Known Merchandise.

Lebanon, Oregon





Russell's Cash Grocery

Phone 27F21

South Main

DR. ROLAND B. MILLER — DENTIST

DR. N. E. IRVINE, PHYSICIAN

DR. DAVID E. REID — OSTEOPATH

DR. H. J. WHELAN — DENTIST

FRANK MEYER — ATTORNEY

LAURENCE MORLEY, ATTORNEY

HARVEY WIGHT — ATTORNEY

SMITH & PIERCE

Automotive Service

Arc and Acetylene Welding

SPENCER PACKING COMPANY

Canned and Frozen Foods

For Defense

Powers-Davis Lumber Company

Manufacturers Of

DOUGLAS FIR LUMBER

Standard Stations, Inc.

Ed. Calahan, Manager

Corner Main and Grant

Lebanon





T. J. VOGEL

For Fine Watches, Diamonds, and Jewelry.

Lebanon Hotel Bldg.

Lebanon, Oregon

"Remember Pearl Harbor"

SANITARY MEAT MARKET

W. P. LESSARD, Prop.

Telephone 2561

PRICE, QUALITY, SERVICE

"What's a Meal Without Meat?"

Compliments of

Scroggin Feed & Seed Company

SILVER WHEEL MOTOR FREIGHT

Lebanon

4th and Sherman

Phone 1981

SMART SHOPPE

Central Lane

"BUY YOUR DATE DRESSES HERE"

Formals, Suits on Special Order.
Reasonable Rates on Alterations.

Our Heartiest Congratulations and Best Wishes
to the Graduating Class of 1942.

Johnny Walker's Super Creamed Ice Cream

Hamburgers, Hamburgers, and More Hamburgers
Our Specialty.

We grind our own beef for our hamburgers.

Try a Johnny Walker "JUICY JUMBO"

Printing and Binding

VAN'S PRINT SHOP

Stationers - Printers

585 Main Street

Lebanon





Acknowledgement



We of the 1942 Annual Staff wish to express our extreme gratitude to Mr. Bryan, Mr. Coe, the entire faculty, students, and school board for their assistance and cooperation in the production of this book.

We are also deeply indebted to Mr. Hickcox, the advisor, for his endless cooperation and to Mr. Van Loh, the printer, for his tireless efforts in the printing of this book.

A large share of our success has been made possible by the sponsors who have so generously contributed to the realization of this Annual.

Memories



Memories



Autographs





Autographs

Ye Muscle Men





Goodbye Teachers



THE END