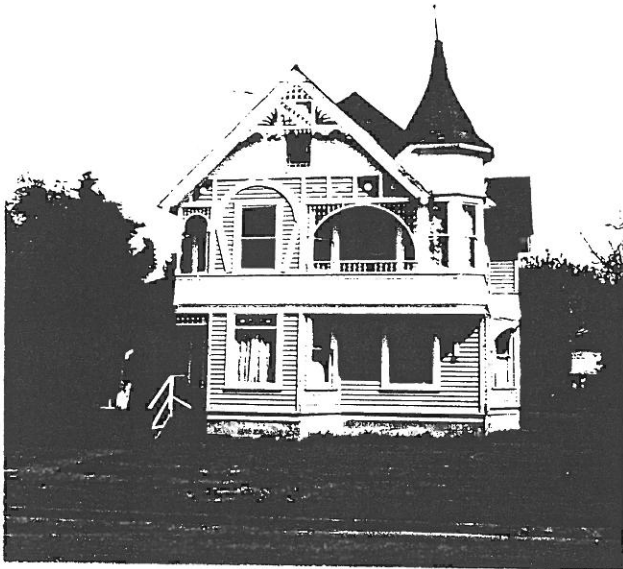


STATE OF OREGON INVENTORY  
OF HISTORIC PROPERTIES  
State Historic Preservation Office  
Oregon State Parks, Salem, OR 97310



County Linn  
Ranking \_\_\_\_\_  
Name  
(Common) Scroggin House/Lebanon Hospital  
(Historic) Scroggin House  
Address 185 West Ash Street  
Present Owner Beverly A. Copeland  
Address 567 East Isabella Street  
Original Use Residence  
Date of Construction c. 1892  
Map Reference Number 25

-----  
Physical description of property and statement of historical significance:

The Scroggin House is a two-story Queen Anne building house with a square floor plan, pyramidal roof and gable-roofed bays on all elevations. The structure is clad with shingles and shiplap siding with corner boards, and rests on a concrete block foundation. A band of fish scale shingles divides the first and second floors. All the gable ends are shingled, contain woven panels with balls and spindles at the peak, and feature verge boards with trim and bull's eye decorations.

The entry porch on the left side of the south elevation features turned posts and ball and spindle decorations below the hip roof. On the left side of the house there is a full height three-story bay. On the ground floor of the bay there are one/one, double-hung side windows and a larger fixed center window with a stained glass transom. To the right there is a second large fixed window with an identical stained glass transom. There is a balcony in the center of the second floor behind a half-round arch and balustrade constructed with balls and spindles. In the right corner there is a five-sided bay containing one/one, double-hung windows. This bay rises into a polygonal turret with fish scale shingles, a tent roof and metal finial. The second floor of the three-sided bay at the left contains one/one, double

(continued)

-----  
Recorded by Heritage Investment Corporation, 813 SW Alder, Portland, OR 97204 (228-0272)  
Allen, McMath-Hawkins, Architects, 213 SW Ash, Portland, OR 97204 (228-5154)

Initials \_\_\_\_\_ Date \_\_\_\_\_

Sources Consulted: see attached.

hung windows with the larger center window framed by a horseshoe-shaped trim board. In the left corner there is a turned post supporting an arch constructed with balls and spindles. Above the second floor windows there is a band containing bull's eye decorations and trim boards. The gable end contains a window with a colored glass border.

The front porch runs back along the west side to the first floor entry and an enclosed staircase addition that serves second floor apartments. There is a small shed addition with two multi-light windows at the base of the stairway addition. At the second floor there is a gable containing two windows.

There is a two-story rectangular addition covering the rear of the house. On the west elevation of this addition there are paired double-hung windows at the first floor. The second story is more recent, featuring square shingles, exposed eaves, a low-pitched roof and a band of nine-light windows. At the northwest corner there is a hip roofed porch with exposed eaves and turned posts. In the center of the north elevation there is a garage with a gable roof and exposed eaves. A shingled gable end and corbeled brick chimney rising behind the second floor indicate the position of the original north wall.

In the middle of the east elevation there is a two-story rectangular bay with paired, one/one, double-hung windows on each floor. There is a one/one, double-hung window on each floor to the left of the bay. The addition on the north has a one/one, double-hung window on the first floor and two multi-light windows on the shingled upper floor. The house was moved from the southwest corner of Second and Ash Streets.

### History

J. P. Scroggin built this house and it was here that Ralph Scroggin, an early mayor and owner of the Scroggin Feed Mill, was raised. J. P. Scroggin ran the Seamore and Scroggin Sawmill and in 1896 opened the bank later known as the Lebanon National Bank and operated by Garland, Mayer and Buhl.

In 1917, Drs. Joel Booth, W. A. Barendick and Bruck Miller established the first hospital with Mrs. C. H. Whitman in charge in what had been the Montague House. In 1919, Drs. N. E. Irvine and Lee Wood joined as Lebanon physicians. In 1919, the doctors purchased the Scroggin House which served as a hospital until 1936, when the brick building now occupied by the library was built. The Scroggin house was converted into an annex with living quarters for non-resident nurses and was also used as kitchen, laundry and storage.

Dr. Booth, one of the most prominent persons in this building's history, was president of the hospital board, promoting the construction of two new hospitals, in 1936 and 1952. Dr. Booth was also a city mayor, state senator, National Guard commander. He spearheaded various community projects and developments as well as belonging to numerous private and fraternal organizations.

### Sources Consulted:

1. Greening, Ronald. National Register of Historic Places - Nomination Form for Booth House, Lebanon, Oregon. January 1980.
2. Irvine, Jim. "1919...Lebanon has always had good physicians...and citizens concerned about good care." Lebanon Express, July 1, 1976.
3. "Notes of a Generation Ago," Lebanon Express, July 14, 1916.

