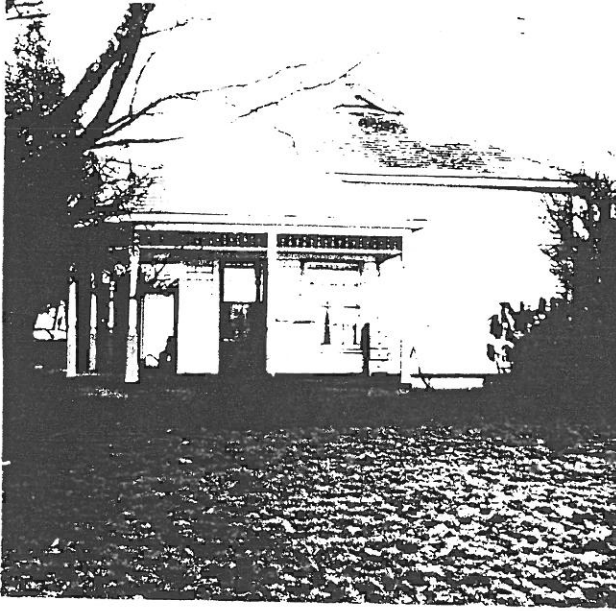


STATE OF OREGON INVENTORY
OF HISTORIC PROPERTIES
State Historic Preservation Office
Oregon State Parks, Salem, OR 97310



County Linn
Ranking _____
Name
(Common) unknown
(Historic) unknown
Address 902 Gore Road
Present Owner Donna and Walter Jackson
Address 37088 Grove Drive
Original Use residence
Date of Construction c. 1890
Map Reference Number 1

Physical description of property and statement of historical significance:

This one-story Queen Anne cottage has a gambrel roof, horizontal siding and a rectangular floor plan. The porch on the northeast corner features turned posts with a ball and spindle frieze. There is a pediment on the corner which is set on a diagonal to the main volume of the house. The porch was rebuilt after a falling tree demolished it in the 1970's. The entry on the side of the north facade has a corniced frame and a new door containing a full height, oval light. To the right there is an eight/eight, double-hung window.

The west facade features three one/one, double-hung windows and an addition on the southwest corner with a shed roof and aluminum frame windows. The original multi-light door has been moved to the south corner of the east facade where a flat roof, open garage has been added. The corbeled cap on the center chimney has been removed.

History

The property is part of the Donation Land Claim of William B. Gore, but the original Gore house is located to the east. The house was nonetheless part of a substantial farmstead.

Recorded by Heritage Investment Corporation, 813 SW Alder, Portland, OR 97204 (228-0272)
Allen, McMath-Hawkins, Architects, 213 SW Ash, Portland, OR 97204 (228-5154)

Initials _____ Date _____

Sources consulted:

Interview with Donna Walter, April 2, 1984.

