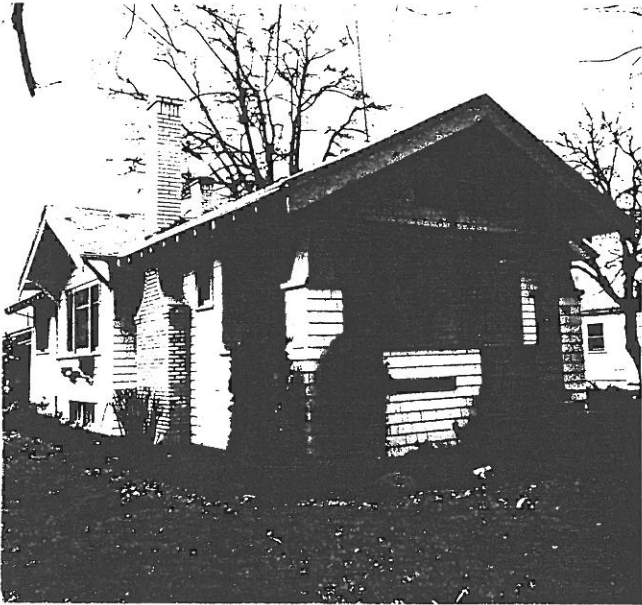


STATE OF OREGON INVENTORY
OF HISTORIC PROPERTIES
State Historic Preservation Office
Oregon State Parks, Salem, OR 97310



County Linn
Ranking _____
Name
(Common) Unknown
(Historic) Northrup-Gilson House
Address 586 Grove Street
Present Owner Bonnie & Robert Gerig
Address 586 Grove Street
Original Use residence
Date of Construction c. 1920
Map Reference Number 4 3

Physical description of property and statement of historical significance:

The Northrup House is a one-story Bungalow with cross-shaped floor plan with the main gable running east/west. The low-pitched gables have verge boards, exposed rafters and diagonal brackets. Front stairs and a three-light door are located in the center of the facade. The porch is offset to the southeast and features battered short square columns set on pedestals and a low wall. There is a horizontal multi-light window in the gable end of the porch roof. On both sides of the front door there are large square windows with multi-light transoms.

The gable end in the middle of the north elevation contains a pair of double-hung windows while the one on the south has a large window with side windows and a flower box. Between the porch and the south facing gable end there is an exterior brick chimney with a curved kick and a decorative brick cap. The house is clad with shingles.

(continued)

Recorded by Heritage Investment Corporation, 813 SW Alder, Portland, OR 97204 (228-0272)
Allen, McMath-Hawkins, Architects, 213 SW Ash, Portland, OR 97204 (228-5154)

Initials _____ Date _____

Sources consulted:

1. Interview with Melvin Gilson, April 26, 1984.
2. Interview with Mira Hassler, May 11, 1984
3. Interview with Frank Grove, May 12, 1984.

Continuation Sheet 1 of 1
Northrup-Gilson House
586 Grove Street
Map Reference Number: 43

History

This house was built for Joseph S. and Meritta Belle Northrup who settled here from Kansas. Northrup ran a garage on Main and Vine Streets.

It was next owned by Mervine and Violet Northrup Gilson. Mervine Gilson belonged to a family of four brothers who ran Gilson Hardware. During the Depression the business could not support all five and they drew lots. Mervine, who had earlier volunteered with the Lebanon Fire Department, became a fire chief which eventually led to becoming Deputy State Fire Marshal in Salem in 1939.

