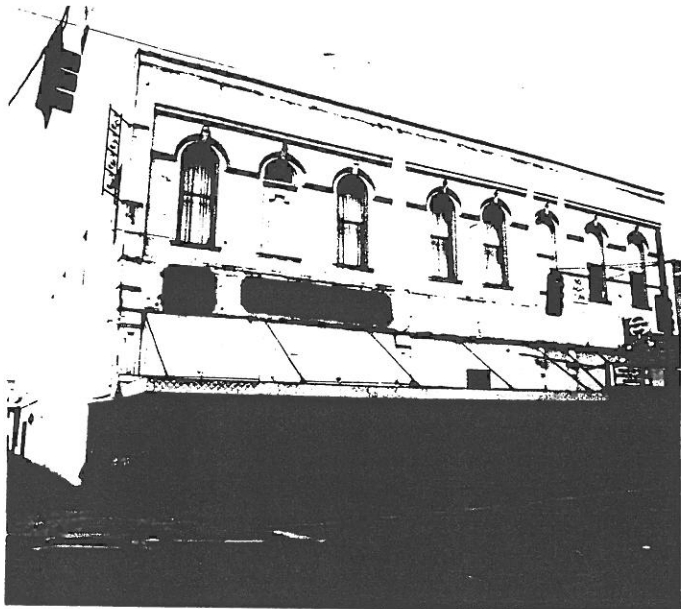


STATE OF OREGON INVENTORY  
OF HISTORIC PROPERTIES  
State Historic Preservation Office  
Oregon State Parks, Salem, OR 97310



County Linn  
Ranking \_\_\_\_\_  
Name  
(Common) Masonic Building  
(Historic) Andrews and Hackleman Building  
Address 780 & 796 Main Street  
Claude Durham and  
Present Owner Lebanon Masonic Lodge #44  
Address P.O. Box 391  
Lebanon, OR  
Original Use Masonic Hall  
Date of Construction 1886  
Map Reference Number 91

Physical description of property and statement of historical significance:

The Andrews and Hackleman Building is a two-story Italianate commercial building with a flat roof and a square floor plan. The front elevation is divided into four bays; on the right there is a small entry bay with two slightly larger flanking bays, and at the south corner there is a single large bay.

The ground floor bays are defined by cast iron pilasters with recessed panels and circular decorations at mid-height. Capitals with sculpted heads below them have been removed, except for one head in the north corner. The ground floor of the north bay contains a recessed entry with a modern wood door and round arch, single-light, fixed window at each side. The second bay contains the stairs to the upper floor and the third bay is a blank brick wall. The original facade was stuccoed. The corner bay contains a pair of aluminum frame glass doors on the right and a pair of large, fixed, single-light, aluminum frame windows at the corner. A flat metal awning is hung below the closed transom.

On the second floor the bays are defined by narrow piers. The corner bay contains three one/one windows in the round arches that have keystones and an interconnecting architrave trim at the top. The bay on the right, above the stairway entry, contains one round arched  
(continued)

Recorded by Heritage Investment Corporation, 813 SW Alder, Portland, OR 97204 (228-0272)  
Allen, McMath-Hawkins, Architects, 213 SW Ash, Portland, OR 97204 (228-5154)

Initials \_\_\_\_\_ Date \_\_\_\_\_

Sources consulted: see attached.

Continuation Sheet 1 of 1  
Masonic Building  
780 & 796 Main Street  
Map Reference Number: 91

window while the flanking bays contain two. Between the second floor windows of the north bay there is a plaque inscribed with "Andrews and Hackleman 1886." The cornice has been removed from the parapet.

The side elevation contains a recessed service door in the southwest corner and four ten-light, metal sash, casement windows on the second floor. The south wall is stuccoed and unfenestrated.

### History

The building was constructed in 1886 by Andrews and C. C. Hackleman, general merchandisers. At its opening the building was also occupied by a printing shop, drug store, doctor's office, grocery, and men's furnishings store. In August 1887 a Masonic Hall holding 300 persons was set up on the second floor. The Masonic meetings were held in city hall originally.

The Lodge, the first fraternal organization in town, received its charter from the Grand Lodge of Oregon on June 24, 1864. The first six worshipful masters were Richard Chadle, W. B. Donaca, E. E. Hammack, Elbert Keebler, S. O. Wallace, and Jonathan Wassom. An Eastern Star chapter was organized in 1899 with E. E. Hammack the first worthy patron. The Eastern Star chapter was named the Margerite Chapter in honor of the first worthy matron, Ella Margerite Davis Craig. Other charter members included G. T. Cotton, Byron Millsap and George H. Buhl.

### Sources Consulted

1. "East Star Chapter Has Home Coming," Lebanon Express. February 7, 1917.
2. Sanborn Insurance Map, 1888.
3. Welsh, William. A Brief History of Oregon City and West Linn, Lebanon, Oregon. Crown Zellerbach Corporation, 1941.



Adams Pharmacy

NO  
RIGHT  
TURN

PEPPER'S  
DUBLIN'S  
MARKET

HOME OF THE  
WORLD'S LARGEST  
PHOTODUPLICATION

DUBLIN'S MARKET