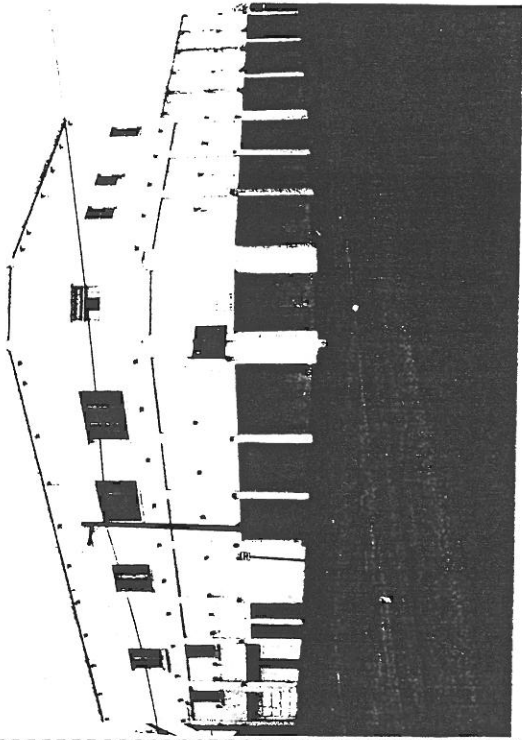


STATE OF OREGON INVENTORY  
OF HISTORIC PROPERTIES  
State Historic Preservation Office  
Oregon State Parks, Salem, OR 97310



County Linn  
Ranking \_\_\_\_\_  
Name  
(Common) Chilcothe Building  
(Historic) Chilcothe Building  
Address 25 West Morton Street  
Present Owner Assemblies of God, OR District  
Address 75 West Morton Street  
Original Use Furniture Store  
Date of Construction 1946  
Map Reference Number 6

Physical description of property and statement of historical significance:

The Chilcothe Building is a reinforced concrete block structure with a flat roof and additions on the side and rear. The original two-story mass is located on the corner and has a rectangular floor plan. The walls are stucco over concrete block which is exposed on the side walls. Four rows of metal brackets indicate extensive cornice and moldings have been removed. The building fronts Main Street with a three-bay, tall arcade, the top half of which is a blind panel. There is an addition to the right which continues the arcade for three more bays, but there is a solid wall between the structures. There is a band of windows along the top of the wall within the arcade and four decorative wood slat panels. On the upper floor there are three small double hung windows. The addition on the right is one story tall with a flat roof and a parapet that equals the height of the original arcade cornice line. There are no openings in the cinderblock wall on the first floor of the north elevation, but on the second floor of the older building there are three multi-light, metal sash windows and a door.

At the southeast corner the building is cut at a 45 degree angle so that the corner bay faces out diagonally. Two piers in the arcade are thickened where the arcade wraps around to the three bays with an arcade on the south. Within the arcade there are three recent

(continued)

Recorded by Heritage Investment Corporation, 813 SW Alder, Portland, OR 97204 (228-0272)  
Allen, McMath-Hawkins, Architects, 213 SW Ash, Portland, OR 97204 (228-5154)

Initials \_\_\_\_\_ Date \_\_\_\_\_

Sources consulted: see attached.

decorative wooden slat panels and an upper band of windows. On the left side of the elevation there are paired doors and garage openings. At the mezzanine level on the left there are two multi-light, metal sash, casement windows. On the upper floor there are two paired six over six, double-hung windows on the left and two larger multi-light, metal sash windows on the right.

On the west elevation there are three small windows at the top, another in the lower right corner, and a six-light, metal sash, casement window at the mezzanine level. There is a 1976 addition to the northwest corner of the original structure which connects to a church built on the adjacent property.

### History

Paul Chilcothe, the main person identified with this structure, moved from Kansas to Lebanon with his family in 1925. Chilcothe owned a fuel business in partnership with Tom Baxter. In 1946, Chilcothe sold the fuel business and with Charles Swanson built the Chilcothe Building. He opened a furniture store on the ground floor which he operated with Baxter and lived in the apartments above.

Chilcothe was married to Lorene Randle, who came from a long time Lebanon family and whose father was the City Recorder. Paul Chilcothe was a volunteer fireman and he and his wife were active in the Methodist Church.

### Sources Consulted

- 1 Interview with Lorene Chilcothe, April 24, 1984.
- 2 Questionnaire from Garland E. Rodgers. April 9, 1984.



FOR RENT  
SEE LISTING

FOR RENT  
SEE LISTING