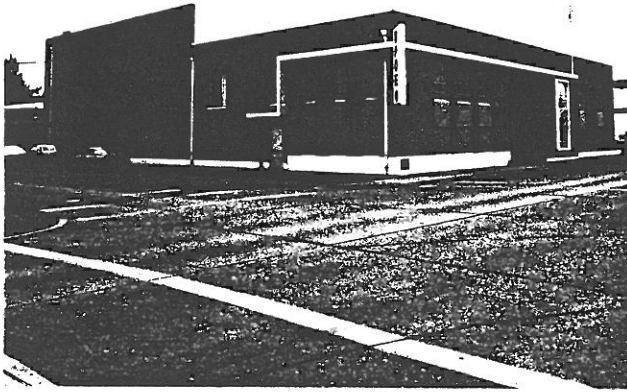


STATE OF OREGON INVENTORY
OF HISTORIC PROPERTIES
State Historic Preservation Office
Oregon State Parks, Salem, OR 97310



County Linn
Ranking _____
Name
(Common) Elks Lodge
(Historic) B.P.O.E. Lodge #1663
Address 633 Park Street
Present Owner B.P.E.O. Lodge #1663
Address 633 Park Street
Original Use Fraternal Lodge
Date of Construction 1949
Map Reference Number 105

Physical description of property and statement of historical significance:

The Elks Lodge is a two-story, Early Modern style building constructed of reinforced concrete with brick cladding and a flat roof. Steel entry doors are inset at the center of the west elevation. At the right of the entry there is a two-story bay with windows on the first and second floors divided by a spandrel that has the Lodge's seal on it. On the right there are two recessed panels with windows on the first and second floors separated by glazed ceramic tile-clad spandrels. The ground floor windows contain rippled glass. There is a large multi-light window above the entry. On the left of the entry there is a strip of concrete at the base with a bronze plaque at the northeast corner showing the building date. There are three recessed panels above this base which contain metal sash windows on the second floor, glazed tiles on the spandrel between floors, and a blank niche filled with light-colored brick on the ground level. There is a flat roof projected out over the second floor windows. A glass sign with BPOE and the Lodge's seal projects out diagonally from the northwest corner.

(continued)

Recorded by Heritage Investment Corporation, 813 SW Alder, Portland, OR 97204 (228-0272)
Allen, McMath-Hawkins, Architects, 213 SW Ash, Portland, OR 97204 (228-5154)

Initials _____ Date _____

Sources consulted:

Survey questionnaire from Burl Lott, April 5, 1984.

Continuation Sheet 1 of 1
B.P.O.E. Lodge
633 Park Street
Map Reference Number: 105

On the north elevation the flat roof projection runs above the second story windows, then down and over a door. The corner windows are set in recessed panels with glazed tiles between floors and light-colored brick on the first floor. The door in the center is located a recessed panel below a large glass block window. To the left of the glass blocks there is a similarly sized multi-light, metal sash window. There is a taller rear section, equal in area to the front half, which is clad with brick on the north elevation but on the other facades remains unfenestrated, rough concrete.

Portland architects Freeman and Hayslip designed this lodge at the same time they were working on the remodeling of the Lebanon High School. Frank J. Lonergan dedicated the building on September 17, 1949. In 1969 a ballroom designed by architect Frank Kendall was added on the east.

4 1/2 .

