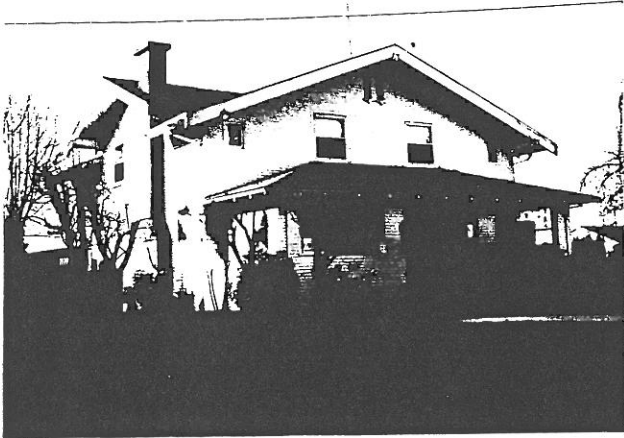


STATE OF OREGON INVENTORY  
OF HISTORIC PROPERTIES  
State Historic Preservation Office  
Oregon State Parks, Salem, OR 97310



County Linn  
Ranking \_\_\_\_\_  
Name  
(Common) Clark House  
(Historic) Clark House  
Address 134 Second Street  
Present Owner B. Bonita Caldwell  
Address 134 Second Street  
Original Use residence  
Date of Construction 1912  
Map Reference Number 9

-----  
Physical description of property and statement of historical significance:

The Clark House is a two-story Bungalow with a gently sloping roof and a rectangular floor plan. The gable end faces the street. The walls are clad with narrow, horizontal siding. The roof has exposed eaves, brackets and verge boards. The hip roof front porch has four piers resting on a low wall with semi-transparent corrugated fiberglass sheets closing the side bays. There is a door in the center and large, fixed windows with multi-light transoms on each side. The window on the right has a two/one, double-hung window on each side. The gable end contains two one/one, double-hung windows at the center, small four-light windows in each corner and paired vents at the peak.

An exterior, beige brick chimney rises up the side of the center gable dormer on the south facade. The gable end contains one/one, double-hung windows and there are windows flanking the chimney on the ground floor. A low-pitched center gable dormer on the north facade also features one/one, double-hung windows. There is a one-story rectangular shed roof bay on the left side of the west facade. An unenclosed, flat roof garage has been added on the southwest corner.

(continued)

-----  
Recorded by Heritage Investment Corporation, 813 SW Alder, Portland, OR 97204 (228-0272)  
Allen, McMath-Hawkins, Architects, 213 SW Ash, Portland, OR 97204 (228-5154)

Initials \_\_\_\_\_ Date \_\_\_\_\_

Sources consulted:

Interview with Nancy Kirklie, May 15, 1984.

Continuation Sheet 1 of 1  
Clark House  
134 Second Street  
Map Reference Number: 9

### History

E. L. and Pearl H. Clark had this home built and lived here for many years. E. L. Clark was from Nebraska and was a partner in the Reeves Clark Department Store located in the First National Bank of Lebanon building. Pearl Clark was a charter member of the P.E.O. Sisterhood and active in the community. When the Clarks lived in the house social gatherings in the music room used to spill out to the porch which guests then used for dancing.

