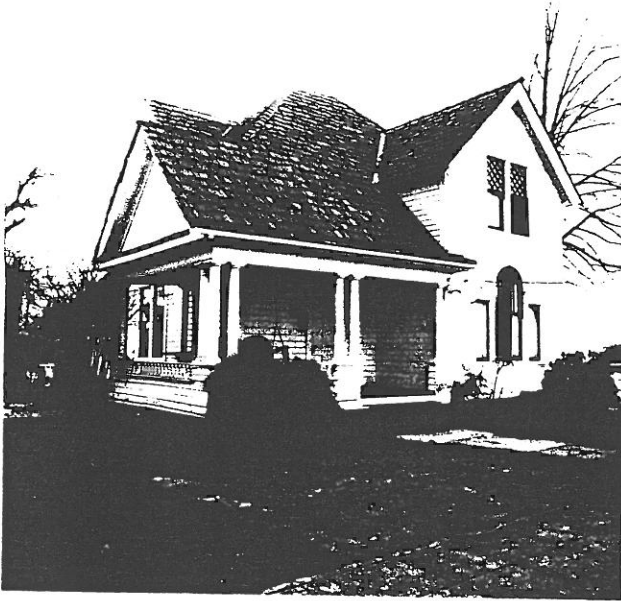


STATE OF OREGON INVENTORY
OF HISTORIC PROPERTIES
State Historic Preservation Office
Oregon State Parks, Salem, OR 97310



County Linn
Ranking _____
Name
(Common) _____
(Historic) Schmidt House
Address 188 West Vine Street
Present Owner Lawrence B. & Sheryle H. McAllister
Address 38635 Weirich Drive
Original Use residence
Date of Construction c. 1900
Map Reference Number 24

Physical description of property and statement of historical significance:

The Schmidt House is a one and a half story Colonial Revival house with a tall hip roof in the center and a gable on each elevation. The house is clad with horizontal siding with corner boards and rests on a concrete block foundation. The porch on the left side of the front elevation features a balustrade set between paired Tuscan columns that are set on pedestals. There is a solid front door with panels and a cornice above the frame. On the ground floor to the right there is a Palladian window with a decorative keystone in the center arch, cornices above the two single-light side windows and intersecting tracery with colored glass in the upper sash of the center window. The gable end above features paired double-hung windows with diamond-shaped leaded glass in the upper sashes. The verges are extended with verge boards that have rounded ends.

In the center of the west elevation there is a two-story bay which is three sided below a rectangular gable end. On the first floor there are one/one, double-hung windows on each face with a small upper sash in the front window containing a colored glass border. There are brackets and pendants below the second floor corners and the gable end contains a pair of one/one, double-hung windows with a cornice, and a verge board with rounded ends. There is a two-story wing at the right with a one/one, double-hung window in the side wall. This wing

(continued)

Recorded by Heritage Investment Corporation, 813 SW Alder, Portland, OR 97204 (228-0272)
Allen, McMath-Hawkins, Architects, 213 SW Ash, Portland, OR 97204 (228-5154)

Initials _____ Date _____

Sources consulted:

1. Interview with Frank Grove and Clay Nichols,
May 12, 1984.
2. Sanborn Insurance Maps, 1892-1913.

Continuation Sheet 1 of 1
Schmidt House
188 West Vine Street
Map Reference Number: 24

is a more recent addition; there are vertical trim boards where corner boards once rested, the windows are shorter and a chimney that would have run up the rear wall now appears where the gable meets the main roof.

In the west wall there is a one/one, double-hung window on the left, a multi-light window on the right, a door in the center and a small window in the gable end. A porch was located in the southeast corner as indicated by alterations above the door, plywood siding where the multi-light window is located, and vertical trim on the east wall.

On the east elevation the side wall of the rear wing is divided twice by vertical trim, with a single light window with a frieze and cornice on the right. The two-story bay in the center has paired one/one, double-hung windows with cornices on each floor, and a smaller one/one, double-hung window on the right between floors. The front porch wraps around from the front and projects out beneath a gable roof. The gable end is stuccoed and forms a pediment with a frieze, paired Tuscan columns and a balustrade. This porch is an addition.

History

Reverend Harvey Schmidt lived here in the 1940's when this was the First Presbyterian Church manse.

