

925 S. Main Street
Lebanon Oregon 97355

TEL: 541.258.4900
www.ci.lebanon.or.us



PRESS RELEASE

Contact: Ron Whitlatch, Engineering Services Director
Phone: 541-258-4269
Email: rwhitlatch@ci.lebanon.or.us

FOR IMMEDIATE RELEASE
Tuesday, May 17, 2022

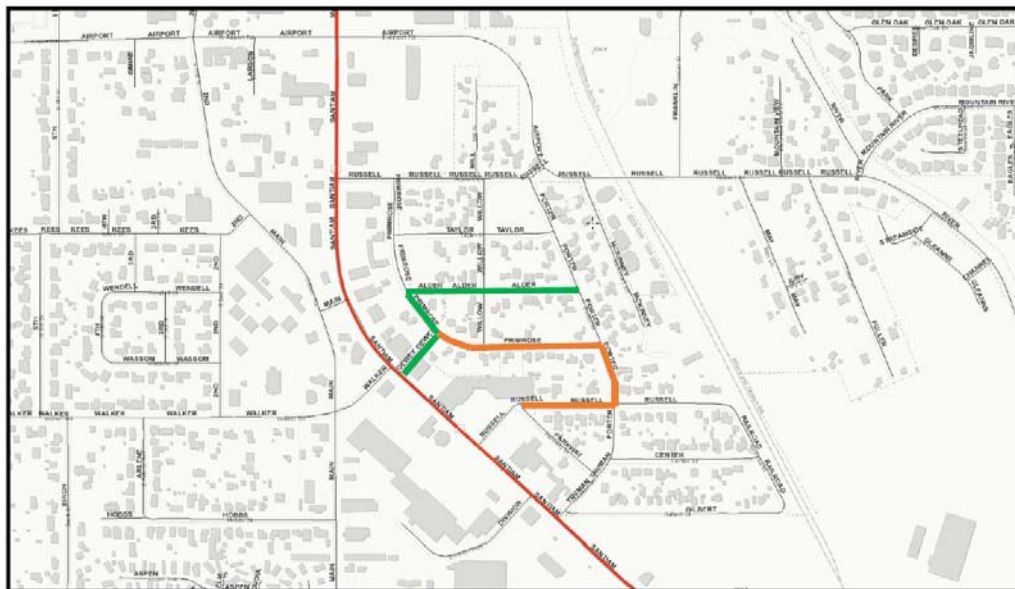
NOTICE OF CONSTRUCTION

Beginning Monday, May 23rd, a portion of Primrose, Porter and Russell Streets will be closed to through traffic for a sanitary sewer main line extension. It is anticipated that the closure will last into mid-July 2022. A detour route will be in place to guide motorists around the closure.

Residents within the impacted area will be afforded reasonable access but should expect short periods of time when access to individual driveways may not be possible in addition to periodic delays and other construction related inconveniences.

For continuous updates regarding construction location, please see the City of Lebanon website at <https://www.ci.lebanon.or.us/gis>.

We appreciate your patience and cooperation as we perform the necessary work. If you have any questions or concerns, please contact Engineering at 541-258-4923 or cdc@ci.lebanon.or.us.



ROAD CLOSED

DETOUR ROUTE

HIGHWAY 20